

BETHS VIP

Excellence - Community - Respect - Nurture

MESSAGE FROM THE HEADTEACHER



We are now moving into the second week of Advent which is observed as a time of waiting and preparation for the celebration of the Nativity at Christmas. The season of Advent anticipates the coming of Christ. It commences on the fourth Sunday before Christmas and ends on Christmas Eve. The most common observance of Advent

outside of church circles is the keeping of an advent calendar or advent candle, with one door being opened in the calendar, or one section of the candle being burned on each day in December leading up to Christmas Eve. The first day of Advent often heralds the start of the Christmas season with many opting to erect their Christmas trees and decorations on or immediately before Advent Sunday. Advent wreaths consist of four candles which represent the four Sundays of Advent with some having a fifth candle known as the Christ Candle in the middle of the wreath lit on Christmas Eve or Day. The candles symbolise the four stages of human history – Creation, the Incarnation, the Redemption of sins and the Last Judgment.



@BethsGrammar



Beths Grammar School



@BethsGS

MESSAGE FROM THE HEADTEACHER

The School is also moving towards its final two weeks before the Christmas break with both students and staff concluding their programmes of study. Parents will begin to receive their sons and daughters report grades based upon this term's work from today, Year 9, with Years 7 & 8 next week and the remainder during the final week. Much thought has been given to their detail and I hope reflect an accurate assessment of what has been done and what is still to do.

With the new changes being put in place by the Government this week and the new variant making itself known, we are enforcing mask wearing in all communal areas and advising their use in areas where large groups congregate outside. Schools were originally given free masks by the Government during the lockdown periods and returning to school. Despite asking people to wear masks again in schools, they are no longer providing them. We will be buying more stock in, but unfortunately will have to charge students 50p should students need one. This charge will be in place from Monday 6th December 2021. Please keep encouraging your child to test regularly, twice a week, or if your child has been notified as being in possible contact with someone who has tested positive, to test daily for 10 days because research has shown that symptoms can come out between 0-10 days of being in close contact.



@BethsGrammar



Beths Grammar School



@BethsGS

MESSAGE FROM THE HEADTEACHER

I would like to take this opportunity to thank our students for abiding by the rules of wearing these masks and understanding the reasons why we are doing it. We honestly want to ensure all students and staff remain safe and are able to enjoy their much needed Christmas break.

The School received the following from the Director of Public Health for the London Borough of Bexley:

I am strongly recommending education settings across Bexley consider including the following in their baseline measures, with effect from Monday 6th December 2021:

- Clear messaging and communications to encourage staff, visitors, students (year 7 and above), and their households to undertake twice-weekly lateral flow testing for people without symptoms.
- Daily check-ins with pupils at the start of the school day to ask whether they have been feeling unwell with COVID-19 symptoms.
- **Altering the in-person Christmas Carol services and performances: allowing children to continue with the performance in schools where they can be filmed or streamed with no one (i.e., parents, friends, family members) coming physically to the premises.**
- Encourage staff to social distance.



@BethsGrammar



Beths Grammar School



@BethsGS

MESSAGE FROM THE HEADTEACHER

Unfortunately, this means that our Christmas Carol Concert originally planned for Tuesday 7th December 2021 in the evening has now been moved to a virtual event. This is really disappointing for us as our students and staff have been working hard on their rehearsals and wanted to perform to a large audience in person. However, we will record the students playing their piece and send you all the link to view it.

The NHS Covid Vaccination programme team (Guy's & St Thomas's Trust) are coming back to school to finish off what the Hounslow & Richmond Community Healthcare team started in October. An email has already been sent home to parents of students aged between 12-15 years. I would just like to reiterate that we as a school, are purely hosting this vaccination programme, it is the choice of the parents and students if they wish to be vaccinated.

We have concluded our Wellbeing week with many worthwhile activities taking place, from pre-recorded daily assemblies, beautiful poems and words from students in KS3 and 4 for the Spoken Word Celebration to "Turn it off Tuesday" and playing board games. It was also lovely to see students and as well as staff, participate in the Gifting to Others on the Friday (a simple gift of time, compliments or a small present to pass on). There will be more on this in next week's VIP.



@BethsGrammar



Beths Grammar School



@BethsGS

MESSAGE FROM THE HEADTEACHER

Finally, another communication from the London Borough of Bexley :

Bexley Crime Survey

With the launch of the latest annual Bexley Crime Survey on 30 September, local people once more have the chance to tell the Bexley Community Safety Partnership (BCSP) about local crime and disorder issues which concern them the most. The partnership will use the responses, alongside other data, to help decide its priorities for 2022/23. We're keen to hear from as wide a cross-section of the community as possible, especially those in the north of the borough and those in the 10 - 25 age group who have historically not responded in great numbers to the survey. The link for the survey is www.bexley.gov.uk/crimesurvey. Paper copies are available upon request. The survey runs until 31 December 2021.

Have a great week ahead
Richard Blyghton



@BethsGrammar



Beths Grammar School



@BethsGS

COVID TESTING

In line with government guidelines, students are encouraged to test at least twice a week and record their results on the school's TestRegister website via the email sent to you.



The poster features a background image of two young men, one in an orange hoodie and one in a blue hoodie, walking outdoors. The text is overlaid on the image. In the top left corner is the HM Government logo. In the top right corner is the NHS Test and Trace logo. A large yellow box in the center contains the text: "Rapid Covid-19 testing twice a week will help us stay ahead of the virus". Below this, in white text on a dark background, it says: "Report your test result each time, whether it's positive, negative or void." At the bottom, it says: "Test at home, report online and keep life moving." followed by "GET YOUR TESTS FROM SCHOOL OR COLLEGE" with a yellow arrow pointing right. The website address "www.gov.uk/report-covid19-result" is at the bottom center.

HM Government

NHS
Test and Trace

Rapid Covid-19 testing twice a week will help us stay ahead of the virus

Report your test result each time, whether it's positive, negative or void.

Test at home, report online and keep life moving. **GET YOUR TESTS FROM SCHOOL OR COLLEGE**

www.gov.uk/report-covid19-result



@BethsGrammar



Beths Grammar School



@BethsGS

THE YEAR 12 FRENCH ELECTIVE

This week in the French elective club, our Year 12 students discussed the migrant crisis, following the tragic news of the death of 27 men, women and children in the English Channel last week.

We read a French news article on the story of the first confirmed victim and why she chose to make the journey. Students were shocked to learn that far from this being an isolated incident, over 25,000 migrants have attempted the dangerous crossing since January 2021, and they discussed who they thought was to blame for this humanitarian crisis: the people smugglers who give migrants false hope and put them on unsafe boats, the French government for not preventing the boats from setting off from their shores, or the British government for making it difficult for asylum seekers to enter the UK by safer means.

Students watched a news clip in French about the reaction of the French and British governments to this disaster: the planned meeting between the French and British Interior Ministers has been cancelled and communication has broken down into finger-pointing.

Having discussed in previous weeks the already-tense relations between France and Britain at the moment following Brexit, the Aukus pact and arguments over fishing permits, we have all agreed that now more than ever, there is a need for diplomacy between France and the UK, and perhaps our linguists could contribute to that!



@BethsGrammar



Beths Grammar School



@BethsGS

THE YEAR 12 FRENCH ELECTIVE

The lesson ended on a more cheerful note, learning 6 tips to speak French like a native.

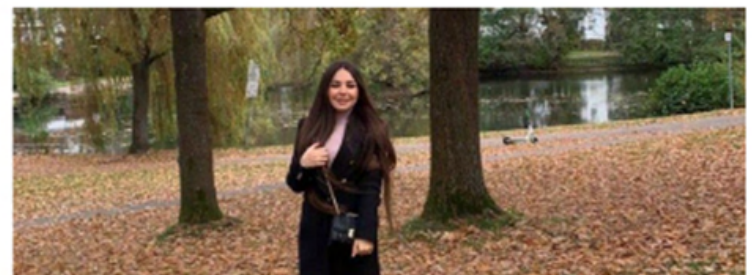
The French Elective runs on odd week Wednesdays from 1:50-2:50 in S14 during the period 3 enrichment session. New members are welcomed and the next session will be Christmas themed, so all Year 12 Francophiles should come along and bring a friend!



Mort de 27 migrants dans la Manche : une première victime identifiée, Mariam voulait rejoindre son fiancé

par [Victor Vasseur](#) publié le 27 novembre 2021 à 15h05

Elle est le premier visage des 27 migrants morts lors d'un naufrage cette semaine au large de Calais. Mariam Nouri Hamadameen avait 24 ans et était impatiente de rejoindre son fiancé au Royaume-Uni. Originnaire d'Iraq, elle avait obtenu un visa italien, mais pas britannique. C'est pourquoi elle a payé un passeur.



@BethsGrammar

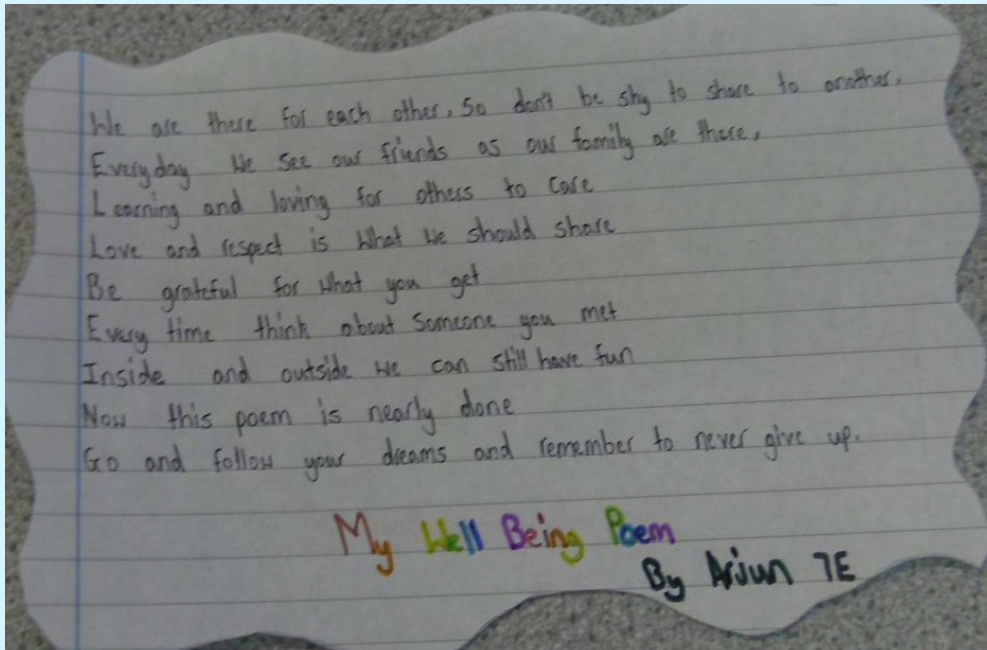


Beths Grammar School

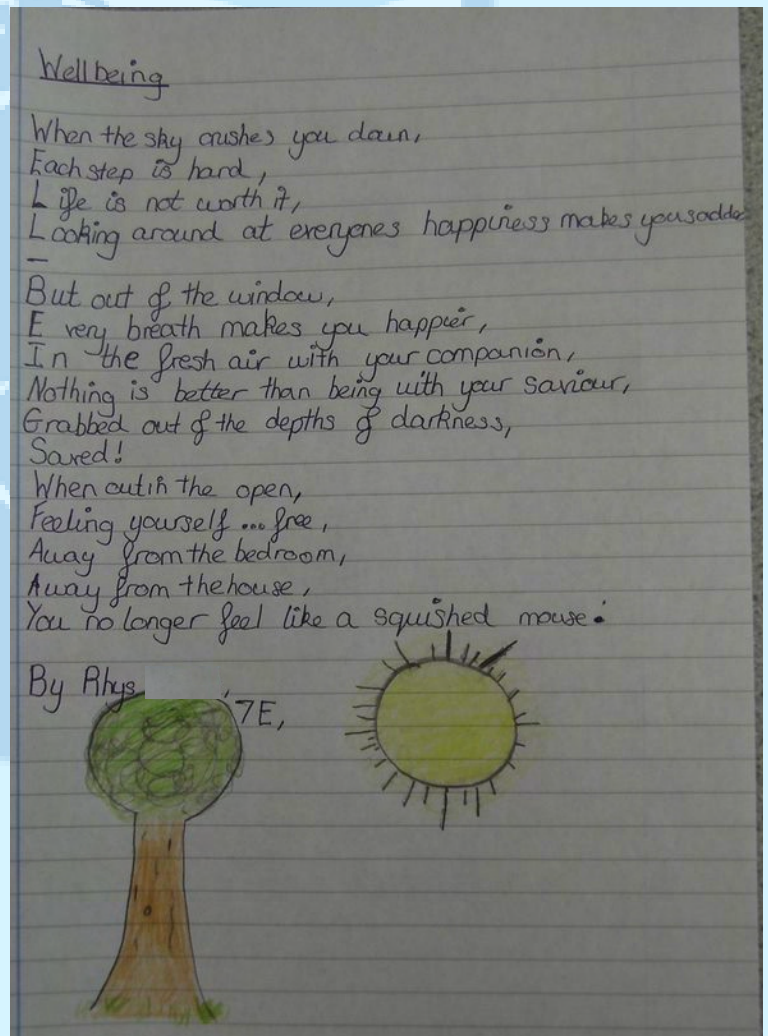
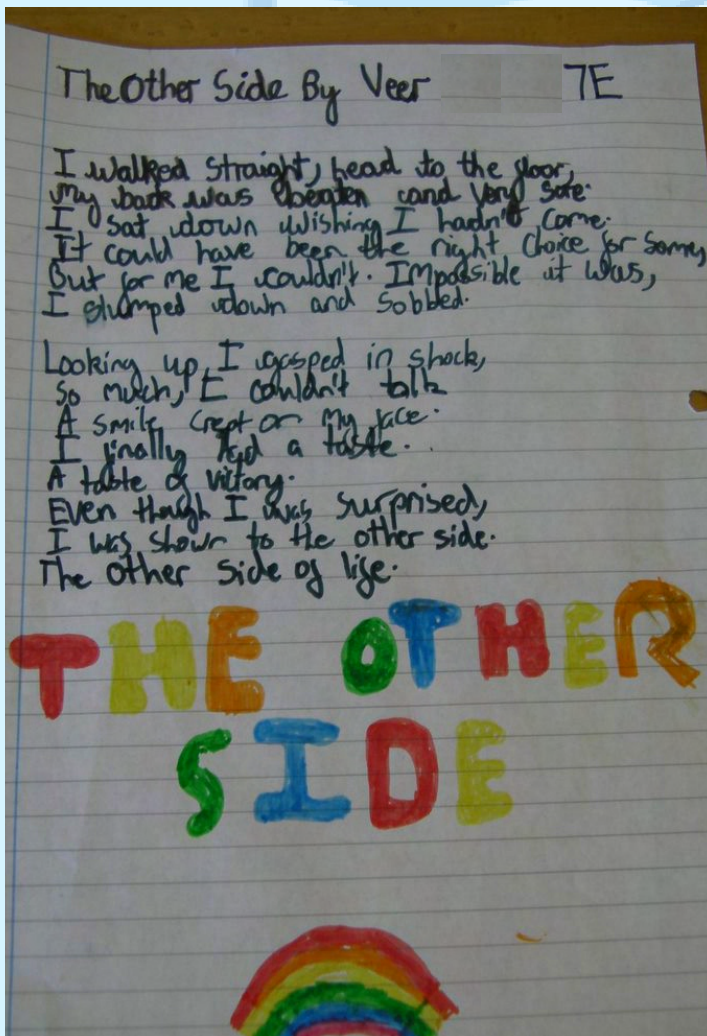


@BethsGS

YEAR 7 ENGLISH WELLBEING POEMS



In English this week, the Year 7 Students wrote poems inspired by Wellbeing week.



@BethsGrammar



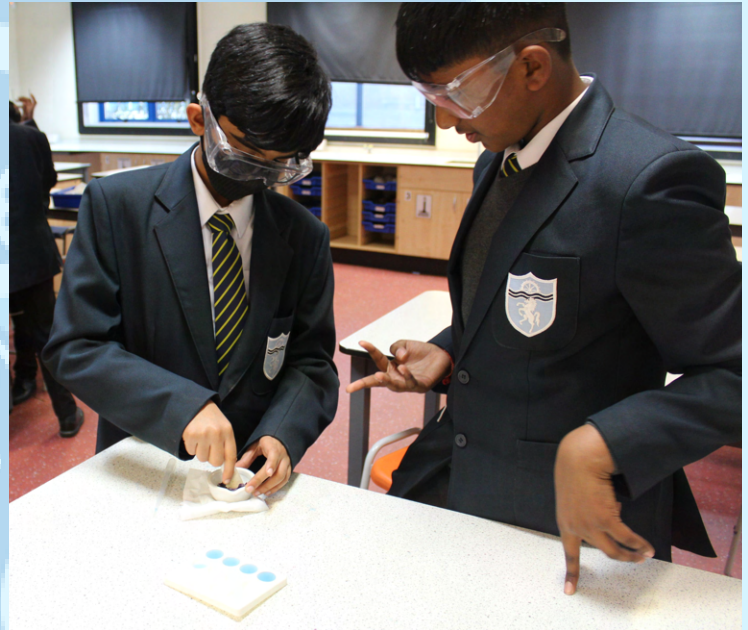
Beths Grammar School



@BethsGS

YEAR 7 STEM CLUB

During STEM club, Year 7 students learnt about natural indicators. With the help of Year 12 Students, they used a range of different natural indicators such as red cabbage and turmeric to figure out the PH levels of different acids and alkali.



@BethsGrammar



Beths Grammar School



@BethsGS

DANIEL 8H CROSS COUNTRY

Congratulations to Daniel in 8H who has been selected to represent Kent at the Southern Intercounties Cross Country championships on 11th December.

This comes after a few months of training at Dartford Harriers and three excellent performances (6th, 7th, 7th) in the first three Kent League Cross Country races this winter.

We are immensely proud of Daniel and this achievement - and good luck for your race later this month.



@BethsGrammar



Beths Grammar School



@BethsGS

STUDENT SUCCESS

Year 8 student Keo performed very well in the Clore Ballroom at the Royal Festival Hall on Sunday 21st November 2021 as part of the London Jazz Festival event. His Jazz Programme, Jazz Hang, where older musicians mentor younger ones, is organised by Tomorrow's Warriors at Trinity Laban in Greenwich.

He played jazz piano on two pieces, Tenor Madness and Maiden Voyage. He even stepped in to play another musician's part when that person had to drop out due to Covid.

He was a bit nervous before getting on stage, but once there he said it was a lot of fun.



YEAR 11 - SIXTH FORM EVENT

On Wednesday 1st December, the Year 11 students attended a subject choices event for their A-level options. Students were given the opportunity to find out about subjects they are interested in studying, and asked lots of different questions! We are also holding Year 12 September 2022 entry guided tours for students outside of our school to find out more about what Beths has to offer.



PLASTIC TUBS



Over the next coming weeks in the run up to Christmas and the New Year, if anyone has spare plastic tubs (Celebrations, Heroes etc) the Art Department would gladly accept any donations. We use them to store our recycled sculpting clay.

Please hand them directly to the art department or reception.



@BethsGrammar



Beths Grammar School

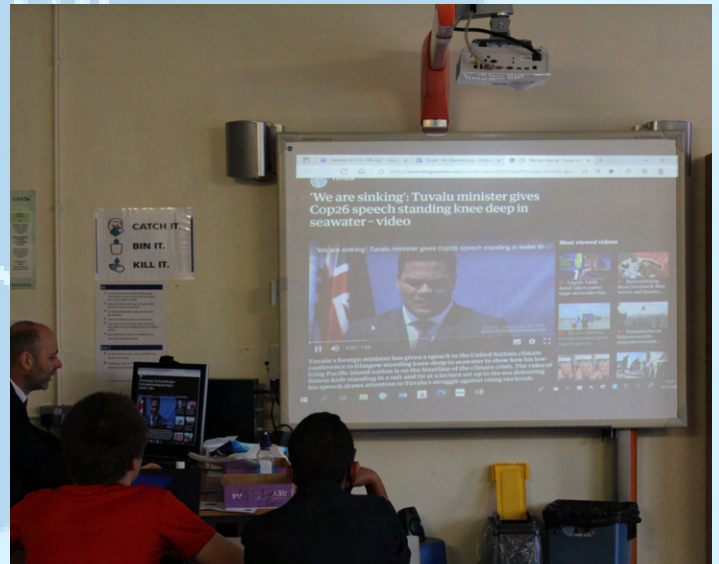


@BethsGS

SUSTAINABILITY BITES

On behalf of KS3 Eco Club we believe that as a school community we should reduce the amount of red meat consumption, especially beef. This is due to the fact that cows emit a large amount of methane, a greenhouse gas. It is 80 times more potent at warming the Planet than carbon dioxide. Methane has accounted for roughly 30% of Global Warming; therefore, we should reduce meat consumption in our school community. Practical actions to reduce your environmental footprint would be to partake in meat-free Monday. Another strategy is to buy food that is locally sourced instead of buying things that come from abroad, this means the food has fewer food miles.

www.meatfreemondays.com



- **KS3 ECO CLUB**



@BethsGrammar



Beths Grammar School



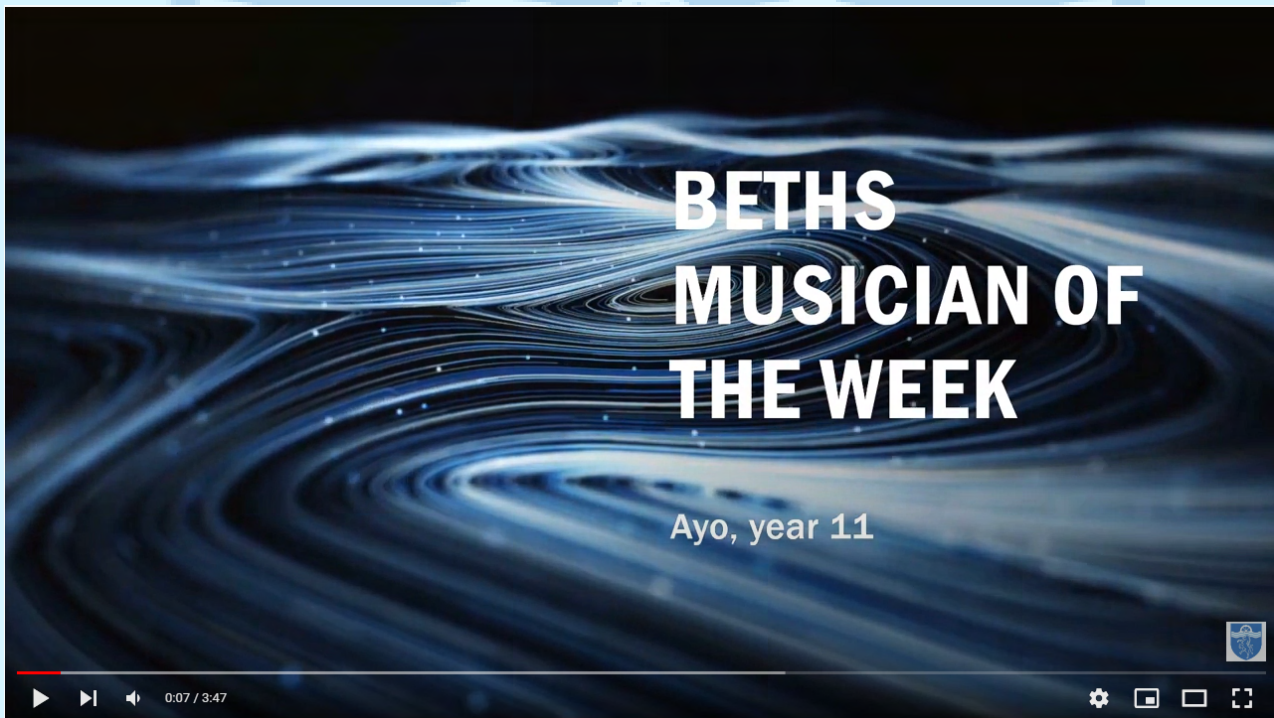
@BethsGS

MUSICIAN OF THE WEEK

This weeks Musician of the Week is: Ayo, Year 11

Here is a really excellent video of Ayo playing his original composition with artwork by Dami, Year 8

Link to video: <https://www.youtube.com/watch?v=yYIsQahXmfw>



Any student who would like to be featured in the Beths 'Musician of the Week', whether it be a group or solo performance or a composition, please send your entries to Ms Marriott msmarriott@beths.bexley.sch.uk

EXTRA-CURRICULAR CLUBS

There are a range of activities/ clubs on offer for students. These activities run before school, lunch time, and after school. Below is a list of all activities currently offered. Please speak to the member of staff listed below if you would like more information.

	MONDAY	TUESDAY	WEDNESDAY	THURSDAY	FRIDAY
Before school 8 – 8.30am	KS3 Basketball	KS3 Basketball	KS3 Basketball	KS4 Basketball	KS4 Basketball
Lunch time KS3 12.00 – 13.00	Year 9 Basketball (Mr Temple) Chess club – Week 1- All key stages in A2, Week 2: KS3 Online (Mr Runacres) Chinese Experience Club – S18		Year 8 Basketball ALL (Mr Webb) ODD WEEK Year 7 Rugby (Mr G.S + Mr Smith)	KS3 Badminton (Mr Temple) KS3 Drama – P3 (Ms Grady) Year 7 and 8 robotics club – A6 (Mr Morgan) Year 8 Design Technology club – A8/A9 (Mr Knott)	Year 7 Basketball (Mr G.S + Mr Smith) Year 8 Football – Team Training (Mr Webb) ODD WEEK ONLY
KS4 12.50 – 13.50	Year 10 Basketball (Mr Smith) Chess Club - Week 2 KS4 and KS5, A2. (Mr Runacres)	Year 11 Basketball	<u>Sixth form:</u> Football, Rugby, Basketball, Netball (Ms Deane/Ms Ewing) Eco-club: KS4/5 –A7A (geography department)	Girls Fitness Sports Hall (Ms Ewing)	Sixth form Basketball (Team) LGBTQ+ Society – S15 (Ms Harris)
After school 3.20 – 4.45pm	Rugby Training Years 7 – 10 KS3 Badminton (Mr Healy)	Year 8 Basketball – Team Training (Mr Webb)	<u>Warhammer Club, S1 (Mr Turnbull)</u>	KS3 Football (ALL) Year 7 Basketball Year 7 STEM club -S12 (Mrs Sarkar) Choir (all staff and students invited) – P12 (Ms Marriot)	

The full list of clubs and activities can be found on the school's website

<https://www.beths.bexley.sch.uk/page/?title=Extra+Curricular+Activities&pid=50>



@BethsGrammar



Beths Grammar School



@BethsGS

RESULTS AND FIXTURES

Results for week ending 2nd December:

FOOTBALL					
03.12.21	KSFA Round 4	U12A	V Hurstmere	Home	KO 14:00pm
06.12.21	ESFA Round 3	U12B	V St Paul's Academy	Home	KO 15:00pm
	ESFA Round 5	U13A	V Simon Langton	Home	KO 14:00pm
	ESFA round 3	U14B	V Shenfield	Away	KO TBC
08.12.21	League	1 st XI	V Bexley Grammar School	Home	KO 14:30pm
	League	2 nd XI	V Langley Park School for Boys	Away	KO 14:30pm
09.12.21	KSFA Qtr Final	U12B	V Ravens Wood School	Home	KO 14:00pm
BASKETBALL					
08.12.21	Tournament Group Match	U18A	V Langley Park School for Boys	Home	Tip Off 14:00pm
09.12.21	Friendly	U13A	V Hayes School	Away	Tip Off 15:15
RUGBY					
04.12.21	Friendly	U12A	V Simon Langton	Home	KO 10:00pm
		U12B	V Simon Langton	Home	KO 10:00pm
		U13A	V Simon Langton	Away	KO 10:00pm
		U14A	V Simon Langton	Away	KO 10:00pm
07.12.21	Friendly	U12A	Year 7 Rugby Festival	Neutral Dartfordians RFC	KO 14:00pm

Fixtures for week commencing 3rd December:

FOOTBALL					
06.12.21	Esfa Round 3	U12B	V St Paul's Academy	Home	KO 15:00pm
	Esfa Round 5	U13A	V Simon Langton	Home	KO 14:00pm
	ESFA round 3	U14B	V Shenfield	Away	KO TBC
08.12.21	League	1 st XI	V Bexley Grammar School	Home	KO 14:30pm
	League	2 nd XI	V Langley Park School for Boys	Away	KO 14:30pm
09.12.21	KSFA Qtr Final	U12B	V Ravens Wood School	Home	KO 14:00pm
BASKETBALL					
08.12.21	Tournament Group Match	U18A	V Langley Park School for Boys	Home	Tip Off 14:00pm
09.12.21	Friendly	U13A	V Hayes School	Away	Tip Off 15:15
RUGBY					
04.12.21	Friendly	U12A	V Simon Langton	Home	KO 10:00pm
		U12B	V Simon Langton	Home	KO 10:00pm
		U13A	V Simon Langton	Away	KO 10:00pm
		U14A	V Simon Langton	Away	KO 10:00pm
07.12.21	Friendly	U12A	Year 7 Rugby Festival	Neutral Dartfordians RFC	KO 14:00pm

*Please note that some matches may be cancelled/postponed and therefore we ask you to keep an eye on the SOCS website.

Beths Grammar School | Sports Home (bethssport.co.uk)



@BethsGrammar



Beths Grammar School



@BethsGS

FIXTURE HIGHLIGHTS

Highlights of the various games our students played over the past week. Well done for all your hard work and dedication, you've done us all proud!

Please see link to the video highlights made by Mr Webb: <https://www.youtube.com/watch?v=Ca1-g-5LdWO>



Link to full sports bulletin for 27th November to 3rd December <https://www.beths.bexley.sch.uk/page/?title=Sports+Bulletin&pid=393>

LUNCH MENU W/C 6TH DECEMBER

INDEPENDENTCATERING | E D U C A T E R L I M I T E D



MONDAY 6 DECEMBER

MAIN Hunters Chicken with Parsley Potatoes, Fresh Baton Carrots and Green Beans

VEGETARIAN Sweet Potato Spinach and Chickpea Cannelloni Bake served with Garlic Bread, Fresh Carrots and Green Beans

STREET FOOD Look out for our Festive Food Market Fortnight - treats available all week

DESSERT Banana Sponge with Custard

TUESDAY 7 DECEMBER

MAIN Our Speciality Curries with a choice of Vegetable, Meat and

Vegan Dishes served with Traditional Garnishes and Accompaniments

STREET FOOD Look out for our Festive Food Market Fortnight - treats available all week

DESSERT Lemon Drizzle Cake

WEDNESDAY 8 DECEMBER

MAIN Roast Sage and Herb Chicken served with

Roast Potatoes, Winter Root Vegetables and Broccoli

VEGETARIAN Roasted Cherry Tomato, Feta and Red Onion Flan served with

Roast Potatoes, Winter Root Vegetables and Broccoli

STREET FOOD Look out for our Festive Food Market Fortnight - treats available all week

DESSERT Chocolate and Orange Cake with Chocolate Sauce

THURSDAY 9 DECEMBER

MAIN Slow Baked BBQ Pulled Pork, Caramelised Red Onions served with

Mini Baked Potatoes, Spiced Sweetcorn and Cooling Lime Slaw

VEGAN Smokey Vegetable and Mixed Bean Chilli served with

Mini Baked Potatoes, Spiced Sweetcorn and Cooling Lime Slaw

STREET FOOD Look out for our Festive Food Market Fortnight - treats available all week

DESSERT Spiced Apple Crumble and Custard

FRIDAY 10 DECEMBER

MAIN Battered Cod and Chips, served with Garden Peas,

Fresh Salad and Sauce Tartare

VEGAN Wild Mushroom and Bean Fricassee with Sweet Peppers and Rice

served with Peas and Mixed Salad

STREET FOOD Look out for our Festive Food Market Fortnight - treats available all week

DESSERT Treacle Tart and Custard

AVAILABLE DAILY FRESH CHEF'S SALAD - WHOLE GRAIN BREAD - GRAB AND GO POT MENU



THE DELI

FRESH CUT SANDWICHES - ROLLS - WRAPS - PITTAS - BAGUETTES
SEE THE BLACK BOARDS FOR SOUPS, THEME DAYS
AND THE CHEF'S SPECIAL

***ALL OUR MENUS ARE TREE NUT AND PEANUT FREE**

INGREDIENTS CONTAINING GLUTEN (INDICATED BY THE NUMBER 1 ON THE MENU) WILL CONTAIN WHEAT, OATS, BARLEY, SPELT, RYE OR KAMUT, OR A COMBINATION THEREOF. IF YOU HAVE ANY ALLERGEN CONCERNS PLEASE SPEAK TO THE CATERING MANAGER. WHILST WE DO NOT BRING WHOLE NUTS OR INGREDIENTS WITH NUTS INTO OUR KITCHENS, SOME PRODUCTS ARE SUBJECT TO 'MAY CONTAIN' STATUS IN MANUFACTURING

WE ONLY USE



FRESH MEAT



FREE RANGE EGGS



MSC FISH



ORGANIC MILK



LOCAL PRODUCE



WHOLEMEAL PASTA

INDEPENDENTCATERING.CO.UK
EDUCATERLIMITED.COM



@BethsGrammar



Beths Grammar School



@BethsGS

BETHS PARENTS ASSOCIATION:

1. Parents Associations' latest events

2. Raising money for these thrilling projects and Giftaid it on Black Friday Sales!

3. Simple ways to donate: Amazonsmile, Easyfundraising and Parents & Friends of Beths PA

At Beths Parents Association, raising funds and improving the learning environment of our children is our aim. We have set up an annual campaign with a donation link to raise funds for our fantastic projects, please visit our website for full details: <https://www.beths.bexley.sch.uk/page/?title=Parents+Association&pid=162>

1. Latest Parents Associations' events

1. The purpose is to raise funds for Beths Grammar school.

2. Payment is made into the parents association's bank account and funds are used to meet the funding requests from Beths Grammar School for things like; musical instruments, sport equipment, school library resources and opportunities for students as may arise

3. It is also a monthly draw with a cash prize.



**Beths Parents
Association
Monthly Draw**



Support the Beths Parents Association by participating in our Monthly Draw

You have the chance to win either a £20 or £10 monthly prize and £50 quarterly prize whilst supporting our fundraising for pupils.

Simply purchase one number for £6 and you can purchase up to 20 numbers maximum for £120 for your chance to win! This enters you in to all 12 draws from January to December. |

Go to link below to purchase your numbers or scan above QR Code (📱)

<https://checkout.square.site/merchant/MLZGAFJKCFPPY/checkout/FVTED45TSCIMO4TBBO2KZBDO>

All proceeds to Beths Parents Association Registered Charity Number 801836
For full details on terms and conditions, see our PA web page



@BethsGrammar



Beths Grammar School



@BethsGS

BETHS PARENTS ASSOCIATION:

It is simple and quick to play! Just follow the two steps below:

1. Complete the membership form and return it via email to: beths.parents.association@gmail.com, it is important that you complete and submit this form to us so that we are able to communicate to you any winnings

Our TARGET is to sell 300 tickets, we have already sold nearly 100. Thank you for helping us meet our target!

Thank you to all families who have already bought their numbers!



Beths Grammar School
an 11 – 18 selective school with academy status
Headteacher: [Mr R J Blaghton](#)
Hartford Road, Bexley, Kent DA5 1NE Tel: 01322 556538 Fax: 01322 621212
Email: admin@beths.bexley.sch.uk Website: www.beths.bexley.sch.uk



2022 Monthly Prize Draw Entry Form

Please complete and return to beths.parents.association@gmail.com

MONTHLY DRAW DETAILS:

FORENAME:

SURNAME:

PHONE NO:

E-MAIL ADDRESS:

SON/DAUGHTER'S NAME:

YEAR & FORM:

AMOUNT OF NUMBERS PAID FOR:

DATE PAID:

NB: By completing this form, you agree to the terms and conditions set out above and consent to the PA processing the information provided in this form, in accordance with our privacy policy which can be found on our website.

Winners will be posted on the school Blog page after the draw is made at each monthly PA meeting.
Beths Parents Association is a registered charity (801836)



@BethsGrammar



Beths Grammar School



@BethsGS

BETHS PARENTS ASSOCIATION:

- Pay for your number or numbers for the full year upfront (i.e. £6 per number per annum up to a maximum of £120 for 20 numbers) by clicking the link below or scanning the QR code below:

<https://checkout.square.site/merchant/MLZGAFJKCFPPY/checkout/FVTED45TSCIMO4TBBO2KZBDO>

- Once your completed form and payment have been received; you will receive an email confirmation with your allocated number or numbers.

- Please ensure that you send us confirmation of payment along with the completed form to beths.parents.association@gmail.com Please submit your applications and payments by the latest 11th January 2022 to be included in the January 2022 draw.

- Visit the PA section of the Beths Grammar School Website for more details: <https://www.beths.bexley.sch.uk/page/?title=Parents+Association&pid=162>



@BethsGrammar



Beths Grammar School



@BethsGS

BETHS PARENTS ASSOCIATION:

Reuse, Reduce, Recycle Scheme: Our brand new 3Rs scheme

Our virtual Nearly New PTA Uniform Shop is now fully open!

We are asking for any donations of **nearly new blazers and unembroidered PE kits**. If you have any of the specified school uniform items that your son has grown out of, please do consider donating it to our PTA Uniform Shop. Simply drop them off at the School Reception. We are aiming to sell these items for you to purchase once we have received donations and can provide an inventory. If you require any items, please email the PTA via beths.parents.association@gmail.com.



Coming soon...

Collection of old foreign currency notes or coins campaign



We are actively working with the school on the coming exciting and educational project in the 3Rs scheme. The Foreign Coins Collection is an easy and enjoyable fundraising idea which will be organised through competitions and in close collaboration with the students and our local community.

Please start searching for your old currencies now and put them in a safe place, but most importantly **SPREAD THE WORD** around you. Your ideas on this project are welcome!



@BethsGrammar



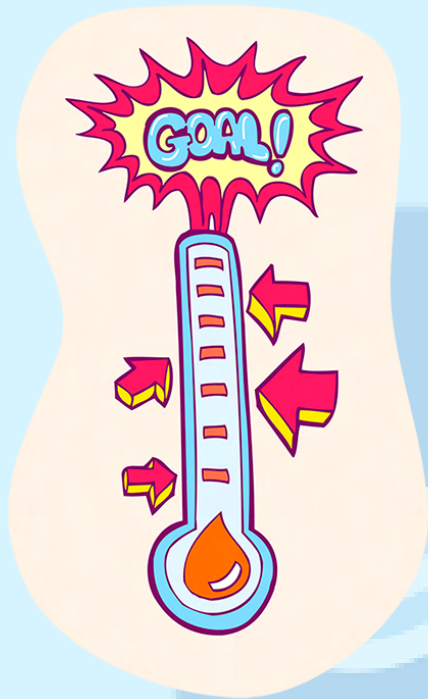
Beths Grammar School



@BethsGS

BETHS PARENTS ASSOCIATION:

2 . Raising money for these thrilling projects!



**£10,000
goal**

**£1,719 already
raised**



- Outdoor chess tables - £2, 000 **Help us Reach our goal of £550!!!**
<https://cafdonate.cafonline.org/16829>
- Radio Beths - £5, 000 **Share the NEWS and DONATE HERE!!!!**
<https://cafdonate.cafonline.org/17268>
- Musical instruments - £2, 000 **DONATE HERE!!!!**
<https://cafdonate.cafonline.org/17270>
- Lighting for drama - £1, 000 (£29 raised) **DONATE HERE!!!!**
<https://cafdonate.cafonline.org/17269>

Please remember to add the Gift Aid by ticking the box within your donations.
Thank you!

Gift Aid can increase the total amount given; extra 25p for every £1 you give. For example with a £100 donation, the PA will receive £125.

*Gift Aid is important for Beths Parents Association and means hundreds of pounds extra go to the school's project and benefit our children. Each time an eligible taxpayer donates and forgets to tick the Gift Aid box, the charity misses out.

*Higher rate taxpayers can also claim part of the tax back from HMRC on their donations.



@BethsGrammar



Beths Grammar School



@BethsGS

BETHS PARENTS ASSOCIATION:

3. Simple and quick ways to donate.

Help us raise funds at no cost for you! It is simple and quick!

1. Generate even MORE funds for Beths Parents Association while doing your shopping

Please go to smile.amazon.co.uk and search for Beths Parents Association. You need to start each of your shopping sessions at the URL smile.amazon.co.uk.



It doesn't cost you anything!

2. Continue generating donations with Easyfundraising

If you shop elsewhere online, please join Easyfundraising. Again it costs nothing to you and Beths PA will automatically receive a donation. You can sign up at www.easyfundraising.org.uk/BethsPA and we will receive a donation anytime you shop. If you are eligible, please also give gift aid to maximise the donation.



BETHS PARENTS ASSOCIATION:

Friends and Sponsors of Beths Parents Associations

We would like to say a special THANK YOU to our sponsors and William Jones who have generously donated towards the second edition of Beths Parents Association Online Chess Tournament, with cash functions and prizes for the winners.



All your support is appreciated,
every pound will help us to get closer to our target goal



@BethsGrammar



Beths Grammar School



@BethsGS

BETHS PARENTS ASSOCIATION:



Next meeting: on Tuesday 14th December,
2021 @ 7.30pm - Zoom

Please keep checking on our website and social media pages
for upcoming events



beths.parents.association@gmail.com



[Beths Parents Association](http://www.bethsgrammarpa.com)



[@bethsgrammarpa](https://www.facebook.com/bethsgrammarpa)



[@BethsGrammar](https://www.instagram.com/BethsGrammar)



[Beths Grammar School](https://www.facebook.com/BethsGrammarSchool)



[@BethsGS](https://twitter.com/BethsGS)

BETHS GRAMMAR SCHOOL,
HARTFORD ROAD
BEXLEY
KENT
DA5 1NE

Email Address: admin@beths.bexley.sch.uk

**Email Address (to be used for items/concerns of a more
'sensitive' nature): headspa@beths.bexley.sch.uk**

Telephone Number: 01322 556538

Fax Number: 01322 621212