

# STUDENT SUCCESS

Beths Grammar scholars once again formed the core of the London Youth Games Hockey Team, being selected to represent Bexley Borough in this year's competition.

Open to all London boroughs, Team Bexley played the tournament at the prestigious Olympic Hockey Stadium, with Beths represented by Callum (9H), Oliver (8E), and Chris (8E).

The team advanced through the initial group stages and entered the second phase, playing another four games before their run ended.

It was a fantastic effort and performance from the boys, proudly representing their borough once again at the games. Congratulations all, and well done for all your hard work. We hope to see you again representing team Beths!



@BethsGrammar



Beths Grammar School

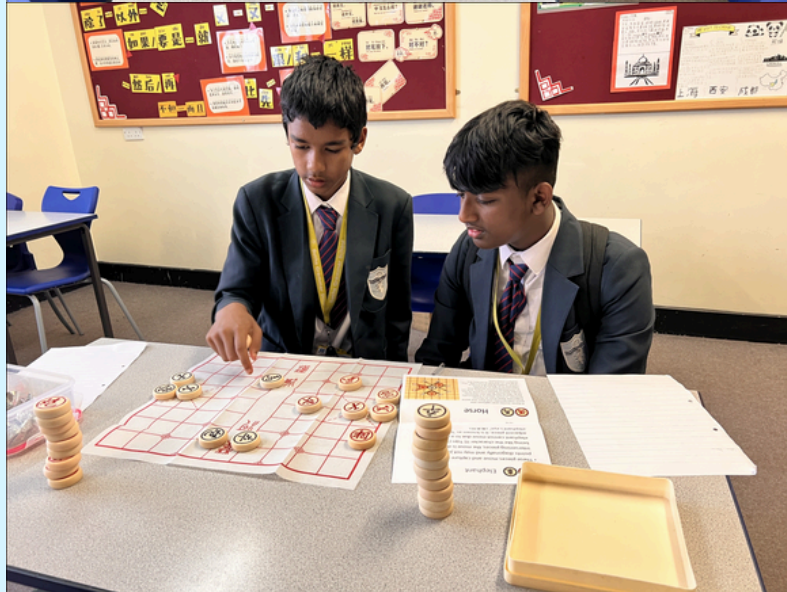


@BethsGS



# CHINESE EXPERIENCE CLUB

The theme of Chinese Experience club was Chinese chess. Students explore the distinctions between international chess and Chinese chess through instructional videos. They studied the rules and strategies of Chinese chess, arranged the pieces with guidance from teachers and peers, and then engaged in gameplay. The winner is was awarded a panda toy as a prize.



@BethsGrammar



Beths Grammar School

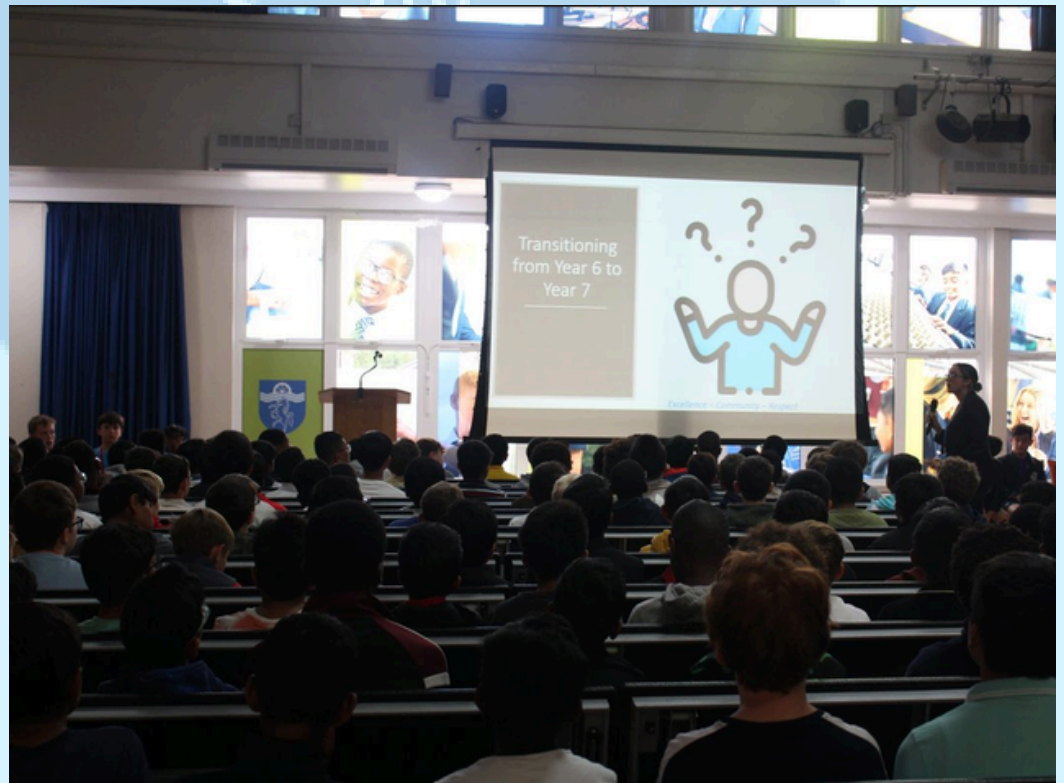


@BethsGS



# YEAR 6 INTO YEAR 7 INDUCTION

We hosted our Year 6 Induction Day for our Year 7 intake for September 2024. The day was packed with excitement and discovery! Students engaged in team-building activities and explored the vibrant life at Beths. It was a fantastic opportunity to settle in ahead of September!



@BethsGrammar



Beths Grammar School



@BethsGS

# RACE FOR LIFE BETHS MEDICINE SOCIETY

On Sunday, some of our Medicine Society students participated in the Cancer Research Race for Life in Blackheath. For this amazing charity, they have raised just over £850 so far, with a goal of £1000.

If you would like to donate, please use the link below:

<https://fundraise.cancerresearchuk.org/team/beths-medicine-society-cancer-research-run>

These students have set an excellent precedent for what it means to be a Beths scholar, consistently striving for excellence and giving back to our community.

Congratulations to Team MedSoc!



@BethsGrammar



Beths Grammar School



@BethsGS



# YEAR 13 PROM

Our Year 13 students celebrated the end of their sixth form education with prom! It was wonderful to see all the students and staff come together to recognise and celebrate Year 13's hard work over the past seven years. Best of luck for all your future endeavours, and a massive well done to the prom committee!



@BethsGrammar



Beths Grammar School



@BethsGS



# BETHS BOOK PODCAST

KS3 Beths Book Podcast - June Eardley edition is now available to be viewed online! <https://youtu.be/9AyhDgk9nqQ>

Reading can be your passport to  
countless adventures

# BETHS BOOK PODCAST



June podcast now available!  
Eardley edition



@BethsGrammar



Beths Grammar School



@BethsGS



# SUMMER CONCERTS

Beths Grammar School is thrilled to announce its spectacular Summer Concert 11th July 2024. This is your golden ticket to an evening of mesmerising music and unforgettable performances!

For more information or to purchase tickets, please click here [www.ticketsource.co.uk/beths-grammar-school](http://www.ticketsource.co.uk/beths-grammar-school)



The poster features a blue background with a piano keyboard at the top. The school crest is in the top right corner. The text 'Beths Grammar School' is in the center, with 'SUMMER CONCERTS' in large, stylized letters below it. Two sun icons flank the title. Below the title, the event details are listed: 'SUMMER CONCERT - 2ND JULY AT 6PM' and 'SUMMER SOIREE - 11TH JULY AT 6PM'. A central illustration shows a violin, guitar, and drums on a keyboard. The bottom right contains the school address and a list of performing groups. A QR code is in the bottom left, and the ticketing website is at the bottom.

Beths Grammar School

**SUMMER CONCERTS**

SUMMER CONCERT - 2ND JULY AT 6PM  
SUMMER SOIREE - 11TH JULY AT 6PM

Beths Grammar School,  
Hartford Road, DA5 1NE

Performances by Beths Big Band, Band Classes,  
Chamber Ensembles, Beths Orchestra and much  
more!

To book a ticket or for more information, please visit  
<https://www.ticketsource.co.uk/beths-grammar-school> or scan the QR code



@BethsGrammar



Beths Grammar School



@BethsGS



# YEAR 5 OPEN EVENTS



## Beths Grammar School

EXCELLENCE ■ COMMUNITY ■ RESPECT

### Year 5 Open Events September 2025 entry

Attention all current Year 5 pupils, parents, and carers! You're invited to an unforgettable experience at our Year 5 Open Events. Discover the vibrant community and exceptional opportunities that await at Beths. Come see firsthand what it means to be a Beths student and why our school is the perfect place for your next chapter. Don't miss this chance to explore, engage, and envision your future with us!



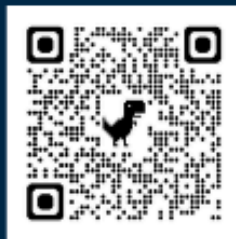
Meet the  
Headteacher,  
staff and  
students.

Each session will run from  
9:15am - 11am on the  
following dates:

Thursday 27th June  
Monday 1st July  
Friday 5th July  
Monday 8th July  
Tuesday 9th July  
Thursday 11th July  
Friday 12th July

To book a space please visit  
[www.ticketsource.co.uk/beths-grammar-school](http://www.ticketsource.co.uk/beths-grammar-school)  
or scan the QR code

**Please note: there is no parking onsite.**



Hartford Road, Bexley, DA5 1NE | [Admin@beths.bexley.sch.uk](mailto:Admin@beths.bexley.sch.uk)  
01322 556538 | [www.beths.bexley.sch.uk/](http://www.beths.bexley.sch.uk/)



@BethsGrammar



Beths Grammar School



@BethsGS

# SCHOOL MENU

**MENU**

INDEPENDENTCATERING | EDUCATERLIMITED

**WEEK 6**

**MONDAY 8 JULY**

MAIN Chef's Summer Salads - see boards for details  
MAIN Chef's Summer Salads - see boards for details (VEGETARIAN)

 **STREET FOOD OF THE DAY - TURKISH** - Chicken Shawarma with Pickles and Yoghurt Sauce

DESSERT Banana Sponge and Custard

**TUESDAY 9 JULY**

MAIN Our Specialty Curries with a choice of Vegetable, Meat and Vegan Dishes served with Traditional Garnishes and Accompaniments

 **STREET FOOD OF THE DAY - CHINESE** - Crispy Chicken Sweet Chilli Flatbread

DESSERT Apple and Berry Crumble with Custard

**WEDNESDAY 10 JULY**

MAIN Roast Gammon served with Crispy Roast Potatoes, Roasted Root Vegetables, Greens and Rich Gravy  
MAIN Herb Crusted Broccoli, Cauliflower and Leek Mornay with Crispy Roast Potatoes, Roasted Root Vegetables, Greens and Rich Gravy (VEGETARIAN)

 **STREET FOOD OF THE DAY - MEXICAN** - Spicy Nachos topped with Cheese and Jalapenos

DESSERT Baked Cherry Pie and Cream

**THURSDAY 11 JULY**

MAIN Chicken Souvlaki and Warm Pitta served with Tzatziki, Chips, Chef's Salad and Slaw  
MAIN Vegetable Halloumi Souvlaki and Warm Pitta served with Tzatziki, Chips, Chef's Salad and Slaw (VEGETARIAN)

 **STREET FOOD OF THE DAY - ITALIAN** - Handmade Margherita Pizza with Fresh Basil and Oregano

DESSERT Victoria Sponge Cake

**FRIDAY 12 JULY**

MAIN Classic Chicken Burger with Salad and Pickles served with Chips, Baked Beans or Chef's Slaw and Salad  
MAIN Salmon and Dill Fish Burger, stacked with Salad and Mayo served with Chips and Peas  
MAIN Spicy Bean Burger in a Bun with Salad and Pickles served with Chips, Baked Beans or Chef's Slaw and Salad (VEGETARIAN)

 **STREET FOOD OF THE DAY - BRITISH** - Ultimate Fish Finger Sandwich

DESSERT Choice of Home Bakes or Dessert Pots

**AVAILABLE DAILY FRESH CHEF'S SALAD - WHOLE GRAIN BREAD - GRAB AND GO POT MENU PLUS A PLANT BASED MAIN COURSE EVERY DAY!**

**THE DELI** FRESH CUT SANDWICHES - ROLLS - WRAPS - PITTAS - BAGUETTES  
SEE THE BLACK BOARDS FOR SOUPS, THEME DAYS AND THE CHEF'S SPECIAL

IF YOU HAVE ANY ALLERGEN CONCERNS PLEASE SPEAK TO THE CATERING MANAGER. WHILST WE DO NOT BRING WHOLE NUTS OR INGREDIENTS WITH NUTS INTO OUR KITCHENS, SOME PRODUCTS ARE SUBJECT TO 'JULY CONTAIN' STATUS IN MANUFACTURING

WE ONLY USE



INDEPENDENTCATERING.CO.UK  
EDUCATERLIMITED.COM



@BethsGrammar



Beths Grammar School



@BethsGS



# KEEPING YOUR CHILD SAFE ONLINE

At The National College, our WakeUpWednesday guides empower and equip parents, carers and educators with the confidence and practical skills to be able to have informed and age-appropriate conversations with children about online safety, mental health and wellbeing, and climate change. Formerly delivered by National Online Safety, these guides now address wider topics and themes. For further guides, hints and tips, please visit [nationalcollege.com](https://nationalcollege.com).

## What Parents & Educators Need to Know about

# POP-UP ADS

# WARNI

### WHAT ARE THE RISKS?

Pop-up advertisements have been a staple of the internet since they were first introduced in the late 1990s. This form of advertising causes a small window or banner to appear in the foreground while someone is browsing a website. Although these adverts are merely irritating for most people, pop-ups can present more severe risks to younger users.

#### DECEPTIVE TACTICS

Children sometimes don't understand that adverts (including pop-ups) are designed to sell a product - and can't distinguish between a legitimate feature of a site and an advertisement. Video games, for example, can be full of pop-up ads that tempt users into spending money, yet they might take the form of a mini-game or extra level.

#### INAPPROPRIATE CONTENT

While some adverts are targeted based on a user's interests and activity online, that isn't always the case. This means that children may unfortunately be exposed to ads for age-inappropriate goods or services such as tobacco products, alcohol and gambling sites.

#### MALWARE RISK

Most pop-ups from reputable advertisers are safe. However, in some cases, pop-ups can trick you into downloading malware - whereby cybercriminals install software on your device, allowing them to access your sensitive data. It can be difficult to know if malware has been installed on your device, so your best option is to avoid engaging with these pop-ups altogether. Be wary of sites that suddenly bombard you with ads or try to prevent you from leaving.

#### PRIVACY RISK

Many app and game developers will collect their users' personal data, such as their name, address, email address, geolocation information, unique numerical identifiers, photos and payment information. If a child clicks on an illegitimate pop-up loaded with malware, all this information could be put at risk.

#### RACKING UP BILLS

If a child has access to a payment card on their device - be it a smartphone, laptop, or tablet - they could very quickly rack up a massive bill by interacting with pop-up adverts and buying products shown to them. Try to keep a close eye on their spending.

#### BEHAVIOURAL IMPACT

Research has found that pop-up ads can even have an impact on children's behaviour. Some of these adverts use manipulative tactics that take advantage of children's developmental vulnerabilities, intentionally or otherwise. This approach may cause a child's mood to shift: becoming more stubborn, for example, if they begin wanting their parents to buy a specific product for them.

SKIP AD > FREE

## Advice for Parents & Educators

#### START A CONVERSATION

It's important to have regular conversations with children about online advertising so that they understand the risks of interacting with pop-ups. For example, if a child asks for a product which has been advertised to them online, ask them why they want it and how they found it: this will present an opportunity to talk youngsters through the tactics used in online marketing.

#### SPOT THE SIGNS

If you're concerned that a child may be following pop-up ads to make online purchases or viewing content that could be harmful, it's important to be able to spot the signs. Due to the often-manipulative nature of these adverts, children who interact with them regularly may show signs of distraction, stubbornness and an increasingly materialistic worldview.

#### MONITOR CONTENT

It can often be difficult to spot when a pop-up advert is malicious - even more so for impressionable younger users. It's important to monitor the content they're consuming to prevent them from clicking on something dangerous. If a pop-up ad seems too good to be true - promising a free iPad, for example - it probably is.

#### PRIVACY SETTINGS

Most modern devices have privacy settings that let you limit the amount of advertising a child is subjected to while using apps or browsing the internet. You may also want to speak to teachers about avoiding sites and apps with advertising, as well as adjusting digital privacy settings on any education technology they use.

#### LIMIT SPENDING

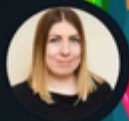
Try to stay aware of what children are spending and ensure that payment details aren't linked to or saved on the gaming platform that they use. Most video games and internet-enabled devices have settings that can help you manage what children can or cannot purchase online.

#### CUT DOWN ON SCREEN TIME

Given the prevalence of pop-up ads (which can appear on everything from smartphones and tablets to internet-connected toys and games), it might be beneficial to limit the time children spend on digital devices to curb their exposure to digital advertising.

#### Meet Our Expert

Carly Page is an experienced technology writer with more than 10 years in the industry. Previously the editor of tech tabloid The Inquirer, she is now a freelance technology journalist, editor and consultant who writes for Forbes, TechRadar and Wired, among others.



Source: See full reference list on guide page at: <https://nationalcollege.com/guides/pop-ups>

@wake\_up\_weds

/www.thenationalcollege

@wake.up.wednesday

@wake.up.weds

Users of this guide do so at their own discretion. No liability is entered into. Current as of the date of release: 29.05.2024



@BethsGrammar



Beths Grammar School



@BethsGS

BETHS GRAMMAR SCHOOL,  
HARTFORD ROAD  
BEXLEY  
KENT  
DA5 1NE

**Email Address: [admin@beths.bexley.sch.uk](mailto:admin@beths.bexley.sch.uk)**

**Email Address (to be used for items/concerns of a more  
'sensitive' nature): [HeadsPA@beths.bexley.sch.uk](mailto:HeadsPA@beths.bexley.sch.uk)**

**Telephone Number: 01322 556538**



**@BethsGrammar**



**Beths Grammar School**



**@BethsGS**