

# BETHS VIP

Excellence - Community - Respect - Nurture

## MESSAGE FROM THE HEADTEACHER

Dear Parents, Carers,



With Easter approaching and the end of our first week's break, I hope you are finding the time to recoup and relax. We have had yet another busy term trying to cram in as much as possible. We welcomed our first school production (The Wizard of Oz) last month which was the first time back on stage since 2019. This was well received along with the Spring Concert where our musicians showcased their talents.

Our students have had an amazing term for achievements. To recap on some of the events, three 6th Form students plus one Yr 11 student participated in the Kent Indoor Championships resulting in three Golds and 1 Silver award. Two of our students made the Oxford University National Computing Challenge Finals, coming 1st and 8th place. Our PE department have had their successes with teams from every year group making the Semi Finals in Basketball, one game still to play after the Easter break and our U12s winning their Final.



@BethsGrammar



Beths Grammar School



@BethsGS

The 1st XI and 2nd XI won their respective football leagues. Four Year 13 students took part in a local Grammar School's University Challenge competition and came first (Chislehurst & Sidcup = 120 points, Townley = 135 points, Bexley = 150..... and Beths = a whopping 360 points). And not forgetting our budding young author in Year 7, Noah having his first book published!

Our students have also been showing their community spirit with fundraising for local charities such as Young Minds and Bexley Women's Aid.

Next term will be another short but full on term with examinations looming. Our Year 12s will have their first set of trial examinations from the Thursday 5th May 2022 and then the public examinations commence for our Year 11s and Year 13s from the 16th May 2022. Our last Parents Evening will take place after the Easter break for our Year 9 students (on Thursday 21st April 2022). This will be followed by the Year 9 Options Evening on Thursday 5th May 2022 - more details on this to follow.

I hope you enjoy the rest of your Easter break.

**Kind regards,  
Richard Blyghton**



@BethsGrammar



Beths Grammar School



@BethsGS

# JACK PETCHEY AWARDS

Congratulations to Prince in 10A who took part in the regional final of the Speaker's Trust/Jack Petchey Speak Up Speak Out competition, your speech was spectacular.



@BethsGrammar



Beths Grammar School



@BethsGS



# JACK PETCHEY AWARDS

Congratulations to all the spring term Jack Petchey award winners! Here is a list of them and all their wonderful achievements.

Jack and Carter 10E spend a lot of personal time acting as Marshalls and time keepers for park runs at weekends - so being of real help and support to our local community.

Ayoola 10B - excellent, all round student who has volunteered by helping out in the LRC for many months, is an active member of the Student Council and took a major role as the Tin man in the school production of Oz, in which he was excellent!

George 10E- came up with the brilliant idea of filling used water bottles with coins, to raise money for the mental health charity Young Minds. George is also a school Well-being ambassador and to raise awareness of mental health issues.



@BethsGrammar



Beths Grammar School



@BethsGS



# JACK PETCHEY AWARDS

Angela 13.9 - Angela is kind, compassionate, has assisted with fundraising events and school committees, and has been a pro-active role model as Deputy Head Girl. Angela also found time to take the part of Glinda, the good witch, in the recent school production of Oz, in which she was wonderful!

Esther 13.3 Esther is simply one of the most committed students to her studies, invariably one of the first to arrive and last to leave, so polite, all work completed to a high level and submitted on time, a marvellous role model to all students.

All of the above show leadership skills and maturity beyond their years and are wonderful examples of 'Beths' students.



@BethsGrammar



Beths Grammar School



@BethsGS

# STUDENT SUCCESS

Well done to Chichi, Prince and Rugiatu in Year 12 and Dante in Year 11 who took part in the Kent Indoor Championship and won loads of gold and silver medals in various athletics events! A huge congratulations and keep up the amazing work!





# BEXLEY BOROUGH GRAMMAR SCHOOLS' UNIVERSITY CHALLENGE

A massive congratulations to our Bexley Borough Grammar Schools' University Challenge winners! You did such an amazing job and made the whole school very proud!



@BethsGrammar



Beths Grammar School



@BethsGS



# LA CASA DE BERNARDA ALBA

The infinite World of Federico García Lorca in  
“The house of Bernarda Alba”  
reminiscing Federico’s García Lorca most famous play.



On Friday 25th March, our Years 12 and 13 A Level -Spanish students, had the amazing opportunity to visit the amazing theatrical performance of “La Casa de Bernarda Alba” at the Cervantes Theatre in London where different values and aspects of the Hispanic world were represented and highlighted by reminiscing Federico’s García Lorca most famous play.

Federico García Lorca (1898-1936), poet and playwright, was one of the greatest Spanish writers of the 20th century. He was killed by the Nationalist faction at the age of thirty-eight at the beginning of the Spanish Civil War, two months after completing ‘The House of Bernarda Alba’ his most famous play which was censored from the start and until 1950 its premier was allowed with subject of censorship and cuts and until 1978 was approved for “minors older than 14”.



@BethsGrammar



Beths Grammar School



@BethsGS

# LA CASA DE BERNARDA ALBA

In the Cervantes Theatre, through this play, we had the opportunity to witness how Lorca demonstrates the harsh reality and tragedy of women in villages of Spain, the repression, passion and the tensions lived in the Andalusian rural villages with great detail, and how the author highlighted the “matriarch’s” domination of her five daughters.

We felt the tension throughout this entire masterpiece by how the women felt enclosed and trapped in Bernarda’s world by the deliberate exclusion of the male characters represented throughout this fantastic work of art.

These are some of the comments we received from our students in Year 12 & Year 13:

- “Me gustó bastante ver una obra de teatro española en Inglaterra, estuvo muy bien. Los actores resonaron conmigo (especialmente Bernarda) y me lo pasé fenomenal. By Chole Year 13.
- “Creo que la obra de teatro fue una adaptación precisa de “La Casa de Bernarda Alba” y las personalidades de los personajes fueron correctas” By Lara Year13



@BethsGrammar



Beths Grammar School



@BethsGS

# LA CASA DE BERNARDA ALBA

- “¡Fue genial!. It was one of them dramatic experiences I have ever watched. The theatre, all female casts, the props, the passion. ¡Gracias a todos los que participaron en la producción!” by Agatha Year 12
- It gave the audience valuable insight on the cultural past of hispanic countries” by Francesco Year 12.

In conclusion, this amazing play was a master piece, it depicted the story which Federico García Lorca created. It was a powerful performance which captivated the scenery of the era. The casting was brilliant and the characters were portrayed fantastically.



@BethsGrammar



Beths Grammar School

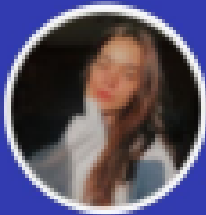


@BethsGS



PRESENTING

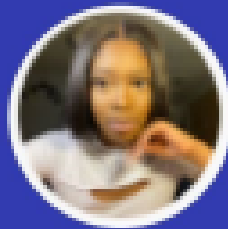
# THE ACADEMIC FIX



HI, I'M LAURA MEDLEY  
FROM YOUTUBE AND  
I'M A FREELANCER.



HELLO, I'M ILYA'S  
CAMBRIDGE ADVICE.  
I STUDY NATURAL  
SCIENCES AT  
CAMBRIDGE.



HI, I'M LOVE FROM  
YOUTUBE. I STUDY  
PPE AT OXFORD.



HI, I'M JETA FROM  
YOUTUBE. I STUDY  
ENGLISH, HISTORY  
AND PSYCHOLOGY  
AND I'M IN YEAR 12.



HELLO, I'M JADOES  
FROM YOUTUBE. I  
STUDY DATA SCIENCE  
AT EXETER.



HI, I'M TENKYIU ON  
TIKTOK. I STUDY  
MATHS, FURTHER  
MATHS, PHYSICS AND  
CHEMISTRY AND I'M  
IN YEAR 12.



HI, I'M  
GCSE POTENTIAL FROM  
TIKTOK. I'M IN YEAR  
11.



HELLO, I'M SEAN AND  
I STUDY PPE AT  
OXFORD.

FOLLOW THE QR CODE AND WATCH  
THE INTERVIEWS AIRING IN THE  
FIRST WEEK OF MARCH!



@BethsGrammar



Beths Grammar School



@BethsGS

**The Academic Fix is an initiative, which aims to help other students navigate the challenges they meet, when going through school. Whether you aim to pursue an academic career or not, the truth is that we all have to do our best with the academic opportunities we have now. My channel is all about how to take advantage of this.**

**On the YouTube channel, there are 8 interviews with incredible social media study influencers (which you can see on the preceding page). I'll be doing a giveaway of a £50 amazon gift voucher at 200 subscribers and 1000 views. So, over the holidays, share the videos and do as much as you can to promote the channel, if you want to be in with a chance of winning the prize. Good luck and have a relaxing Easter holiday break!**

**Levi 10B**



**@BethsGrammar**



**Beths Grammar School**



**@BethsGS**

# YEAR 7 LATIN FORUM

**WHEN: EVERY THURSDAY (STARTING 28TH APRIL)**

**TIME: 3.20-4.15PM**

**WHERE: S15**

**5 WEEKS ONLY**

## LATIN FORUM

An exclusive 5-week  
workshop for Year 7

Did you know that you can take  
**Latin** as a **second language** in  
**Year 8?**

**Come along to the Latin Forum** to get  
a taster of **Latin**, explore the **myths**  
behind Percy Jackson, debate whether  
the **Romans** or the **Greeks** were  
superior and much more, all through **fun**  
**and games!**

**EMAIL MS HARRIS FOR MORE INFORMATION**



@BethsGrammar



Beths Grammar School



@BethsGS



# EXTRA-CURRICULAR CLUBS

There are a range of activities/ clubs on offer for students. These activities run before school, lunch time, and after school. Below is a list of all activities currently offered. Please speak to the member of staff listed below if you would like more information.

	MONDAY	TUESDAY	WEDNESDAY	THURSDAY	FRIDAY
<b>Before school</b> 8 – 8.30am	KS3 Basketball	KS3 Basketball	KS3 Basketball	KS4 Basketball	KS4 Basketball
<b>Lunch time</b> KS3 12.00 – 13.00	<ul style="list-style-type: none"> <li>Year 9 Basketball (Mr Temple)</li> <li>Chess club – Week 1- All key stages in A2, Week 2: KS3 Online (Mr Runacres)</li> <li>Chinese Experience Club – S18</li> </ul>	<ul style="list-style-type: none"> <li>Year 10 and 11 Basketball,</li> <li>Coding Club,</li> <li>Memrise Club,</li> </ul>	<ul style="list-style-type: none"> <li>Year 8 Basketball ALL (Mr Webb) ODD WEEK</li> <li>Year 7 Rugby (Mr G.S + Mr Smith)</li> <li>Eco – Club (KS3) – A4</li> </ul>	<ul style="list-style-type: none"> <li>KS3 Badminton (Mr Temple)</li> <li>KS3 Drama – P3 (Ms Grady)</li> <li>Year 7 and 8 robotics club – A6 (Mr Morgan)</li> <li>Year 8 Design Technology club – A8/A9 (Mr Knott)</li> </ul>	<ul style="list-style-type: none"> <li>Year 7 Basketball (Mr G.S + Mr Smith)</li> <li>Year 8 Football – Team Training (Mr Webb) ODD WEEK ONLY</li> <li>KS3 LGBTQ+ Society – (S16/S17)</li> </ul>
<b>KS4 and KS5</b> 12.50 – 13.50	<ul style="list-style-type: none"> <li>Year 10 Basketball (Mr Smith)</li> <li>Chess Club - Week 2 KS4 and KS5, A2.</li> <li>(Mr Runacres)</li> <li>Beths Bar</li> <li>Year 7 and 8 Robotics</li> </ul>	<ul style="list-style-type: none"> <li>Year 8 and 9 Basketball,</li> <li>School Production Rehearsals – P3,</li> </ul>	<ul style="list-style-type: none"> <li>Sixth form: Football, Rugby, Basketball, Netball (Ms Deane/Ms Ewing)</li> <li>Eco-club: KS4/5 –A7A (Geography department)</li> <li>Music KS4 Revision</li> </ul>	<ul style="list-style-type: none"> <li>Girls Fitness Sports Hall (Ms Ewing)</li> </ul>	<ul style="list-style-type: none"> <li>Sixth form Basketball (Team)</li> <li>KS4 Badminton</li> <li>LGBTQ+ Society – S15 (Ms Harris)</li> <li>KS5 Music Revision</li> </ul>
<b>After school</b> 3.20 – 4.45pm	<ul style="list-style-type: none"> <li>Rugby Training Years 7 – 10</li> <li>KS3 Badminton (Mr Healy)</li> <li>School Production</li> <li>Song writing Club,</li> <li>Computing Year 11 and 13 revisions,</li> <li>KS4 Robotics Club – A6</li> <li>Song Writing Club – P2</li> </ul>	<ul style="list-style-type: none"> <li>Year 8 Basketball – Team Training (Mr Webb)</li> <li>School Production</li> <li>Orchestra</li> </ul>	<ul style="list-style-type: none"> <li>Warhammer Club, S1 (Mr Turnbull)</li> <li>Year 8 and 9 Basketball</li> <li>6<sup>th</sup> form band (session 3 in P2, 2-3pm)</li> <li>Piano orchestra</li> <li>Anime Piano Club – P2</li> </ul>	<ul style="list-style-type: none"> <li>KS3 Football (ALL)</li> <li>KS4 Basketball</li> <li>Year 7 STEM club -S12 (Mrs Sarkar)</li> <li>Choir (all staff and students invited) – P12 (Ms Marriot)</li> <li>KS3 Violin Club,</li> <li>Beths Singers</li> </ul>	<ul style="list-style-type: none"> <li>Big Band Rehearsals</li> <li>Year 7 Basketball</li> </ul>

The full list of clubs and activities can be found on the school's website

<https://www.beths.bexley.sch.uk/page/?title=Extra+Curricular+Activities&pid=50>



@BethsGrammar



Beths Grammar School



@BethsGS

# RESULTS AND FIXTURES

## Results for week commencing 25th March - 1st April:

FOOTBALL					
28.03.22	KS3 North Kent Comp Quarter Finals	U12A	V Hurstmere Foundation School for Boys	Away	Won 2 - 3
29.03.22	KS3 North Kent Comp Semi Finals	U13B	V King Henry	Home	Won 6 - 2
30.03.22	KS3 North Kent Comp Quarter Finals	U13A	V St Columba's	Home	Won 7 - 4
30.03.22	KS3 North Kent Comp Semi Finals	U12B	V Hurstmere	Away	Lost 2 - 1
31.03.22	KS3 North Kent Comp Quarter Finals	U12A	V Bexley Grammar	Home	Lost 1 - 2
BASKETBALL					
24.03.22	Kent Basketball Semi Finals	U12A	V Hayes	Home	Won 52 - 24
28.03.22	Kent Basketball Semi Finals	U15A	V Langley Park School for Boys	Away	Lost 52 - 42
29.03.22	Kent Basketball Finals	U13A	V Hayes School	Neutral (Northfleet School)	Lost 59 - 41
30.03.22	Kent Basketball Semi Finals	U18A	V The North School	Away	Lost
01.04.22	Kent Basketball Finals	U14A	V Langley Park School for Boys	Neutral (Northfleet School)	Lost 45 - 42
01.04.22	Kent Basketball Finals	U12A	V Langley Park School for Boys	Neutral (Northfleet School)	Won 42 - 59

\*Please note that some matches may be cancelled/postponed and therefore we ask you to keep an eye on the SOCS website.

Beths Grammar School | Sports Home ([bethssport.co.uk](http://bethssport.co.uk))



@BethsGrammar



Beths Grammar School



@BethsGS

# SPORTS BULLETIN

Highlights of the various games our students played over the past week. Well done for all your hard work and dedication, you've done us all proud!

Please see link to the video highlights:

<https://www.youtube.com/watch?v=ESb6tLm9d1k>



@BethsGrammar



Beths Grammar School



@BethsGS



# BETHS PARENTS ASSOCIATION:

## 1. PA's new fundraising campaign: Lighting for drama

THANK YOU for your continuous support.

Spring Concert: promoting Musical Instruments: £286 raised



The Beths Parents' Association are keeping busy and supported the Music Department fantastic Spring Concert on Thursday 29th March by providing refreshments and organising a much-appreciated raffle with great prizes.

Our target of £2,000 so please kindly donate via this QR code anytime from now on or by following this link:

<https://cafdonate.cafonline.org/17270>

Lighting for drama: £627 raised

Beths Parents Association are very happy to be supporting the current production of **The Wizard of Oz** by providing refreshments and organising a raffle! With this in mind, we would be so grateful if you could consider donating money to our next fundraising campaign which is to raise £1,000 for new drama lights for the Drama department.



@BethsGrammar



Beths Grammar School



@BethsGS

# BETHS PARENTS ASSOCIATION:

The current drama lights date from the 1960s and are only accessible by ladder and only have one colour option. The new lights which the Drama department is requesting are state-of-the-art remote-controlled lights which vary in colour and will provide an even better experience for future theatrical productions.

## 2. Bring in your Chess Board Game

With our 3Rs scheme, the PA is launching a new fundraising initiative by asking for donations of any used or non-used chess kit for the students at the school's Chess club.

If you have a Chess Board Game at home that you are not using anymore, could you please give them a new life by kindly donating them to our students?

THANK YOU for your continuous support.



## Our virtual Nearly New PTA Uniform Shop is now fully open!

We are asking for any donations of nearly new blazers and unembroidered PE kit. If you have any of the specified school uniform items that your son has grown out of, please do consider donating it to our PTA Uniform Shop. Simply drop them off at the School Reception.

We are aiming to sell these items for you to purchase once we have received donations and can provide an inventory. If you require any items, please email the PTA via [beths.parents.association@gmail.com](mailto:beths.parents.association@gmail.com).

UNIFORM. DONATIONS.



@BethsGrammar



Beths Grammar School



@BethsGS

# BETHS PARENTS ASSOCIATION:

## 3. Reuse, Reduce, Recycle Scheme: PA's new 3Rs scheme



Easter holidays are approaching...and the counting will start on Wednesday 20th April 2022



Please Keep your foreign currency if you are travelling abroad and bring them on @PSHE

**Beths' giant map is now ready to showcase the countries where your collected coins are coming from will! Thank you for sharing your fantastic stories!**



@BethsGrammar



Beths Grammar School



@BethsGS



# BETHS PARENTS ASSOCIATION:

## 4. Raise money for these thrilling projects and Giftaid it!



Generating donations & It doesn't cost you anything!

Many among us are shopping online! Help us raise more funds while you do your shopping! Please go to [smile.amazon.co.uk](https://smile.amazon.co.uk) and search for Beths Parents Association. You need to start each of your shopping sessions at the URL [smile.amazon.co.uk](https://smile.amazon.co.uk).



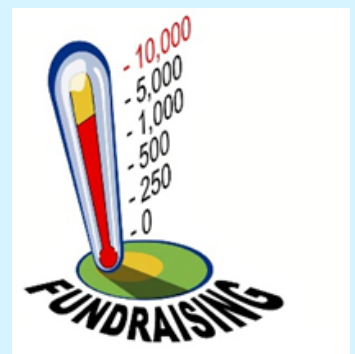
If you shop elsewhere online, please join **Easyfundraising**. Again it costs nothing to you and Beths PA will automatically receive a donation.

You can sign up at [www.easyfundraising.org.uk/BethsPA](https://www.easyfundraising.org.uk/BethsPA) and we will receive a donation anytime you shop. If you are eligible, please also give gift aid to maximise the donation.

The other exciting projects chosen by parents with the aim to raising £10,000 which can be increased by 25% with Giftaid

£2,928 has already been raised! THANK YOU! Every £5,000 by donating £ help us to get closer to our target goal.

Radio Beths -  
<https://cafdonate.cafonline.org/17268>



@BethsGrammar



Beths Grammar School



@BethsGS



# BETHS PARENTS ASSOCIATION:

## Friends and Sponsors of Beths Parents Associations

We would like to say a special THANK YOU to our sponsors and William Jones who have generously donated towards our three editions of Beths Parents Association Online Chess Tournament, with cash functions and prizes for the winners.



Why not become a Sponsor by donating and having your business logo published on our pages! Please contact us for more details:  
[beths.parents.association@gmail.com](mailto:beths.parents.association@gmail.com) THANK YOU!

### Important dates

- Coin collections last days - Wednesday 20th April 2022: Bring your Coins Collection @ PSHE



@BethsGrammar



Beths Grammar School



@BethsGS

# BETHS PARENTS ASSOCIATION:



Next meeting: on Tuesday 19th April 2021 @  
7.30pm - Zoom

Please keep checking on our website and social media pages  
for upcoming events



[beths.parents.association@gmail.com](mailto:beths.parents.association@gmail.com)



[Beths Parents Association](http://www.bethsgrammarpa.co.uk)



@bethsgrammarpa



@BethsGrammar



Beths Grammar School



@BethsGS

BETHS GRAMMAR SCHOOL,  
HARTFORD ROAD  
BEXLEY  
KENT  
DA5 1NE

**Email Address: [admin@beths.bexley.sch.uk](mailto:admin@beths.bexley.sch.uk)**

**Email Address (to be used for items/concerns of a more  
'sensitive' nature): [HeadsPA@beths.bexley.sch.uk](mailto:HeadsPA@beths.bexley.sch.uk)**

**Telephone Number: 01322 556538**



**@BethsGrammar**



**Beths Grammar School**



**@BethsGS**