

# BETHS VIP

Excellence - Community - Respect - Nurture

## MESSAGE FROM THE HEADTEACHER

Dear Parents, Carers,



As we are approaching the end of the year and coming to the end of a busy term, I would like to reflect on a number of events that have taken place since the start of December.

Our first Sixth Form girls football team had their first match this week against Ravens Wood School, with the growth in girls and women's football, I hope we can continue with a girls team at Beths.

Years 7 and 8 have been supporting local charities this month. Both year groups are collecting food items to create bumper hampers for Bexley Foodbank by the 15th December. They recently ran a campaign within the school for any coats (mens, womens, children and babies) to be donated to HandsOn London's charitable initiative, WrapUp London. With rates of homelessness and sleeping rough on the rise within our local boroughs and the city, this is one simple thing that we can do to make sure that those facing the harshest of cold conditions this winter are supported. These items were taken to the Sidcup Fire Station where they will be passed on to the charity.



@BethsGrammar



Beths Grammar School



@BethsGS



We have our Christmas Concert taking place on Tuesday 12th December at 6pm. Please come along and support our Music department and budding musicians.

Tickets are available at [www.ticketsource.co.uk](http://www.ticketsource.co.uk)

Next week we will be celebrating Winter Book Week with the English department. There will be a range of activities for students, including KS3 Book Fair with Scholastics, a book signing with Dr Adam Kay, Q&A with our very own Dr Easton, on her two published poetry books, Spelling Bees competitions and more! I look forward to sharing these with you next week.

Christmas Dinner for students will take place Monday 18th - Wednesday 20th December. More information will be sent out to parents shortly.

We wish our staff, students, and parents a happy Hanukkah. We hope you have a wonderful weekend celebrating.



Kind regards,  
Richard Blyghton



@BethsGrammar



Beths Grammar School



@BethsGS



# CHINESE CLUB

During Chinese club this week, students were introduced to Chinese Ink and colour-mixing. They learnt about the chrysanthemum, together with the plum blossom, orchid, and bamboo. They have been regarded as the 4 symbols of noble characters by Chinese scholars since ancient times. This unique aspect of the chrysanthemum makes it a symbol of strong vitality and tenacity in the eyes of scholars.



@BethsGrammar



Beths Grammar School



@BethsGS



# KS3 ECO-CLUB

During KS3 Eco-Club students enjoyed the challenge of a House Quiz. The Year 9 Eco-Club students created and delivered a quiz to Year 7 form groups. The quiz was on environmental issues & geographical knowledge.

Well done all for your hard work, and we hope you enjoyed the quiz!



@BethsGrammar



Beths Grammar School



@BethsGS



# YEAR 8 MANDARIN LESSONS

Our Year 8 Mandarin students had the wonderful opportunity to attend a Taichi workshop organised by Peking University, China. Students had an amazing time learning about Chinese culture while keeping fit.



@BethsGrammar



Beths Grammar School



@BethsGS



# DEPARTMENT OF THE WEEK: MATHS

During Year 9 Maths lessons this week, students are enjoying learning about simultaneous equations. We asked a few students what they liked about maths:



- Pelumi 9E: "I really enjoy maths and particularly the simultaneous equations we are currently looking at"
- Sam-J 9W: "Mathematics helps us to understand the values of the unknown"
- Ahmad 9E: "I really enjoy the algebraic parts of maths"
- Gabriel 9W: "I like maths because it is a fun challenge"
- Jareed 9H: "Maths is an exceptional subject which I profoundly enjoy as it warms your brain and prepares you for the day"



@BethsGrammar



Beths Grammar School



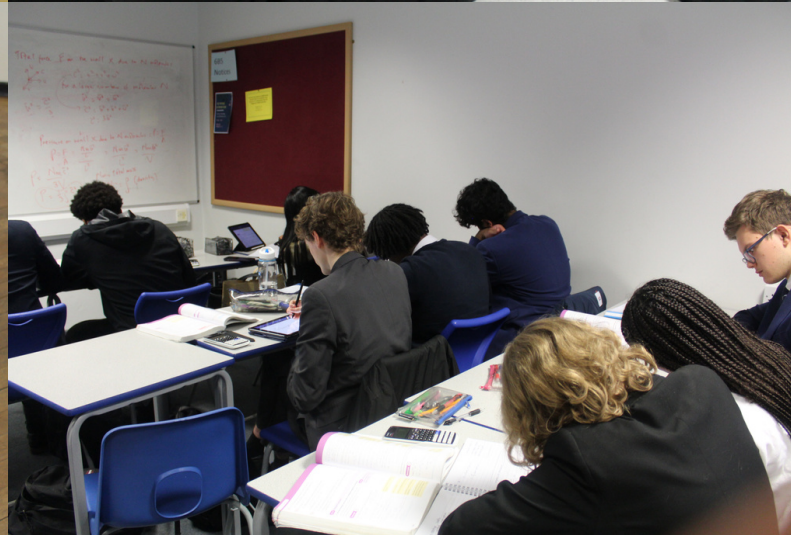
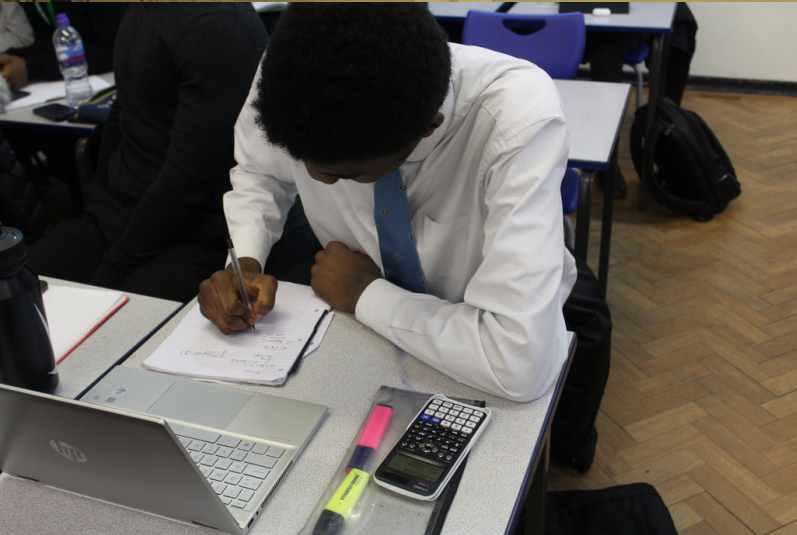
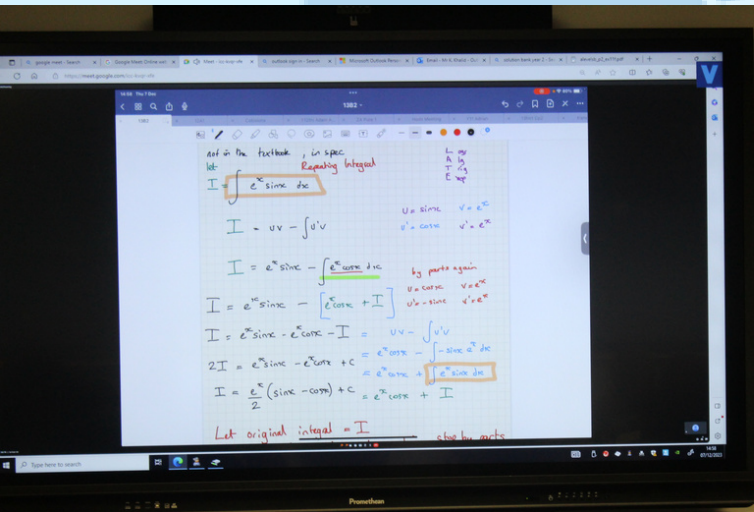
@BethsGS



# DEPARTMENT OF THE WEEK: MATHS

Our Year 13 maths students are learning about parametric equations and integration by parts.

When asked what he likes about maths: student A said ' I love learning new things and the teachers are great at teaching and broadening my understanding of complicated topics.'



@BethsGrammar



Beths Grammar School



@BethsGS

# WINTER BOOK WEEK

From 11th-15th December, we will be holding a Winter Book Week, filled with many wonderful events including; Shakespeare Spelling Bee, poetry reading and Q&A, author talk and book signing and much more!

Please find more information below.



**Winter Book  
Week:  
11<sup>th</sup>-15<sup>th</sup>  
December**

**Throughout week: Shakespeare spelling bee (Dr Easton/Ms Minkowich)**

**Monday**

KS4 Assembly – Ms Quinn

Yr10 - Session 1 and 2 – Amelia Kyazze - author talk and book signing in Main Hall.

**Tuesday**

Year 12 Assembly – Ms Cale

KS3 Lunch: Scholastic Book Fair, **English Department**

**Wednesday**

KS5 – 9.15am 45 minute informal chat with Dr Adam Kay in Main Hall (book signing TBC)

KS3 Lunch: Scholastic Book Fair, **English Department**

**Thursday**

Year 13 Assembly: Ms Cale

KS4/5 Lunch: Film Club – Top five book adaptations with a focus on The Godfather.

KS4/5 lunch: Dr Easton poetry reading and Q&A

**Friday**

KS3 assembly: Dr Easton

KS4/5 Lunch: Kerry Barrett – author talk and book signing in Conference Room.



@BethsGrammar



Beths Grammar School



@BethsGS



# FIXTURES AND RESULTS

## Results for week commencing 4th December

FOOTBALL					
Date	Competition	Team	Opposition	Venue	Result
04.12.23	North Kent	U14A	V Bexleyheath Academy	Home	Won 6-0
05.12.23	ESFA Rd 4	U14A	V Ravens Wood School	Away	Lost 2-0
06.12.23	KSFA League	1 <sup>st</sup> XI Girls	V Ravens Wood School	Home	Lost 0 -7
06.12.23	KSFA League	2 <sup>nd</sup> XI	V Langley Park School for Girls	Away	Won 0-2
07.12.23	North Kent	U12A	V Bexley Grammar	Away	TBC
07.12.23	North Kent	U12B	V Tunbridge Wells	Away	Lost 1-0

BASKETBALL					
Date	Competition	Team	Opposition	Venue	Start time
04.12.23	Friendly	U12A	V Sevenoaks School	Away	Lost 50-40
07.12.23	Area Cup	U14A	V Trinity	Away	TBC

\*Please note that some matches may be cancelled/postponed and therefore we ask you to keep an eye on the SOCS website.  
Beths Grammar School | Sports Home ([bethssport.co.uk](http://bethssport.co.uk)).

If you have any questions, please email us at  
[fixtures@beths.bexley.sch.uk](mailto:fixtures@beths.bexley.sch.uk)



@BethsGrammar



Beths Grammar School



@BethsGS

# FIXTURES

Photos from fixtures this week:



Our Year 7B Kent Cup 1/4 final v Tunbridge Wells GS. It was another tight contest between the two sides, but a late winner from TWGS means Beths are knocked out of the competition. Well done to the team, a great achievement in their first year playing together!



Our Sixth Form girls had their first fixture of the season against Ravens Wood School.



@BethsGrammar



Beths Grammar School



@BethsGS



# FIXTURES AND RESULTS

## Fixtures for week commencing 11th December

BASKETBALL					
Date	Competition	Team	Opposition	Venue	Start time
11.12.23	Kent Cup	U15A	V Northfleet Technology College	Away	3:45pm

FOOTBALL					
Date	Competition	Team	Opposition	Venue	Start time
08.12.23	KSFA Rd 4	U15A	V Eden Park High School	Away	3:30pm
11.12.23	ESFA Rd 4	U12A	V Royal Russell School	Away	2:15pm
12.12.23	North Kent Cup	U15A	V Hurstmere Foundation School	Away	2pm
13.12.23	Kent League	2 <sup>nd</sup> XI	V North Kent College	Home	2pm
14.12.23	North Kent Cup	U14A	V Trinity	Home	2:15pm
14.12.23	North Kent Cup	U12A	V Bexleyheath Academy	Away	2:30pm

RUGBY					
Date	Competition	Team	Opposition	Venue	Start time
09.12.23	Friendly	U14A	V Robert Clack School	Away	10am
09.12.23	Friendly	U12A, U12B, U13A	V Robert Clack School	Home	10am
13.12.23	Friendly	1 <sup>st</sup> XV	V Wilmington Grammar Boys	Neutral	2pm
15.12.23	Friendly Tournament	U12A, U12B	V Hayes School	Away	2pm

\*Please note that some matches may be cancelled/postponed and therefore we ask you to keep an eye on the SOCS website.  
Beths Grammar School | Sports Home ([bethssport.co.uk](http://bethssport.co.uk)).

If you have any questions, please email us at  
fixtures@beths.bexley.sch.uk



@BethsGrammar



Beths Grammar School



@BethsGS

# BOOK FAIR

On Tuesday 12th and Wednesday 13th December during Key Stage 3 we will be running a Book Fair. It will be during lunchtime in the English Area. The fair will be cashless and the books can viewed and paid for by following the QR code on the poster.

**SCHOLASTIC** TRAVELLING BOOKS

## COME TO THE BOOK FAIR

Your support helps earn **FREE BOOKS** for our school

Book Title	Author	Original Price	Special Price	Age Rating
The Hunger Games: The Ballad of Songbirds & Snakes	Suzanne Collins	£8.99	£8.99	13+
Wonder	R.J. Palacio	£7.99	£4.99	13+
Heartstopper	Alice Oseman	£12.99	£8.99	13+
The Immortal Games	Annaliese Avery	£8.99	£8.99	13+
Five Survive	Holly Jackson	£8.99	£8.99	13+
Twelve Bones	Robie & Talbot	£8.99	£8.99	13+

**SAVE £3**

The best new books from only **£2.99**



@BethsGrammar



Beths Grammar School



@BethsGS



# CHARITABLE INITIATIVES

Scholars and staff across the school community are being encouraged to bring in items that will be donated to Bexley Foodbank. The festive season can often be a stressful time and put additional pressure on those who may be struggling at this time. The final day for scholars to donate to this cause is on Friday, 15th December. During the collection period, a creative team of scholars will be helping to build a bumper hamper to hold the year group's collection of donations in. A list of urgent and surplus products can be found on the Bexley Foodbank website: <https://bexley.foodbank.org.uk/give-help/donate-food/>.



**Christmas**  
**FOOD DRIVE**

Build a collection of food in your tutor group to be donated to Bexley Foodbank.

**Deadline for items:**  
**15th December**

**SCAN TO SEE WHAT IS NEEDED**



Bexley Foodbank will collect items on 18th December. Food containing alcohol such as mince pies and Christmas pudding are not accepted.



@BethsGrammar



Beths Grammar School



@BethsGS

# MUSIC CONCERT

Join us at Beths Grammar School to celebrate the Christmas Spirit through the joy of music! At our Christmas Concert, you will hear music from our Beths Big Band, the Year 9 Band Class, Chamber Ensembles and so much more! We hope you will join us for the magical evening.

The concert will run on 12th December from 6pm- to approximately 8pm



@BethsGrammar



Beths Grammar School



@BethsGS



# KEEPING YOUR CHILD SAFE ONLINE

At National Online Safety, we believe in empowering parents, carers and trusted adults with the information to hold an informed conversation about online safety with their children, should they feel it is needed. This guide focuses on one of many platforms which we believe trusted adults should be aware of. Please visit [nationalonlinesafety.com](https://nationalonlinesafety.com) for further guides, hints and tips for adults.

## What Parents & Carers Need to Know about DISNEY+

The Walt Disney Company's streaming service, Disney+ combines entertainment from the famous animation studio itself with Pixar, Star and National Geographic, plus the Marvel and Star Wars franchises. With access to the latest releases, Disney classics and original series, there's plenty of content to explore. While parents may have noted that adverts have now been introduced on some versions of the service, the platform is – unsurprisingly for a Disney product – designed to be appropriate for the whole family.

### WHAT ARE THE RISKS?

#### LESS SUITABLE CONTENT

While Disney+ is predominantly family friendly, there are some movies and shows in its library which are aimed at an older audience: these may scare younger ones or contain themes or language that you'd rather your child wasn't exposed to. You could avoid such situations by enabling Junior Mode (see 'Adjust content settings', below) or specifying a content age rating for your child's profile.



#### BINGE WATCHING

With the option to view content on any internet-enabled device and a growing catalogue of movies, cartoons and documentaries, Disney+ can make managing screen time difficult. This could result in children binge watching content, distracting them from activities like homework or socialising. Too much screen time has also been shown to negatively impact mood, sleep patterns and weight.



#### PHISHING EMAILS

Be especially cautious if you receive emails or text messages purporting to be from Disney+. There have been numerous reports of online scammers impersonating Disney+ staff in an attempt to gain access to subscribers' personal information. Disney+ states it will never email or call customers asking for their payment details, their private information or their password.



#### ENCROACHING ADVERTS

Disney+ has introduced a new subscription package – Disney+ Standard with Ads – which plays commercials before movies and during shows (like many TV channels). There are no adverts in Junior Mode, but profiles with a content rating of 6+ years will see ads appropriate for that age category. Adults who give consent will see personalised adverts based on their location and viewing history.



#### ACCESSING ADULTS' PROFILES

If adults don't set a PIN for their profile, children could access it and encounter content which isn't age appropriate. In the settings, Junior Mode has a toggle titled 'Kid-Proof Exit' which requires the user to read four words (numbers, spelled out) and enter them to switch profiles. For older children who can read, though, this isn't secure enough – so using a PIN for adult profiles is recommended.



### Advice for Parents & Carers

#### ADJUST CONTENT SETTINGS

When setting up an account, there's an option to create profiles in what's called Junior Mode. This generally covers material that's suitable for children up to age 6 and is therefore fairly limited. You can give older children a wider choice of viewing by building a standard profile, then going into the settings and choosing a content rating from one of the pre-set alternatives: 6+, 9+, 12+ or 14+.



#### ADD PIN PROTECTION

Disney+ enables you to effectively lock profiles behind a four-digit PIN. In particular, some of the shows on the platform's Star content hub are far more oriented to adults (including several hard-hitting dramas from US networks), so protecting parents' or older siblings' profiles with a PIN will help to prevent younger children stumbling across material which isn't intended for them.



#### TURN OFF AUTO-PLAY

When a cartoon, show or movie finishes, Disney+ uses algorithms to identify content with similar themes, which it thinks your child will also enjoy. This suggestion will then automatically begin to play by default. There's an option to turn off this auto-play function in the profile settings, which will encourage your child to take a break from the screen and move on to a different activity.



#### ENJOY AS A FAMILY

When your child watches a movie or show on Disney+ for the first time, you may want to sit with them to ensure it's suitable. You could do the same when introducing them to older films that you haven't seen for years: your perception of what's appropriate has very probably changed, and some of the language and attitudes in movies from your own childhood may seem quite shocking today.



#### Meet Our Expert

Dr Claire Sutherland is an online safety consultant, educator and researcher who has developed and implemented anti-bullying and cyber safety policies for schools. She has written various academic papers and carried out research for the Australian government comparing internet use and sexting behaviour of young people in the UK, USA and Australia.



Source: [https://help.disneyplus.com/csp?id=csp\\_article\\_content&sys\\_kb\\_id=1f88cd3dbefc498603eac03361210](https://help.disneyplus.com/csp?id=csp_article_content&sys_kb_id=1f88cd3dbefc498603eac03361210) [https://help.disneyplus.com/csp?id=csp\\_article\\_content&sys\\_kb\\_id=982efcbdbaac0095caad3196197](https://help.disneyplus.com/csp?id=csp_article_content&sys_kb_id=982efcbdbaac0095caad3196197) <https://help.disneyplus.com/en-gb/article/disneyplus-en-us-scam-prevention#-text=be%20wary%20of%20sites%20that%20ask%20for%20passwords%20or%20billing%20details>

@natonlinesafety

/NationalOnlineSafety

@nationalonlinesafety

@national\_online\_safety

Users of this guide do so at their own discretion. No liability is entered into. Current as of the date of release: 00.00.2023



@BethsGrammar



Beths Grammar School



@BethsGS

BETHS GRAMMAR SCHOOL,  
HARTFORD ROAD  
BEXLEY  
KENT  
DA5 1NE

**Email Address: [admin@beths.bexley.sch.uk](mailto:admin@beths.bexley.sch.uk)**

**Email Address (to be used for items/concerns of a more  
'sensitive' nature): [HeadsPA@beths.bexley.sch.uk](mailto:HeadsPA@beths.bexley.sch.uk)**

**Telephone Number: 01322 556538**



**@BethsGrammar**



**Beths Grammar School**



**@BethsGS**