

# BETHS VIP

Excellence - Community - Respect - Nurture

## MESSAGE FROM THE HEADTEACHER



The week beginning Monday 29th November is the School's Wellbeing Week and a number of activities and foci are intended to address the five ways of maintaining yours and other's wellbeing. The NHS has set out what it believes to be the five ways to wellbeing:

### **1. Connect with other people**

Good relationships are important for your mental wellbeing. They can help you to build a sense of belonging and self-worth, give you an opportunity to share positive experiences and provide emotional support allowing you to support others.

### **2. Be physically active**

Being active is not only great for your physical health and fitness, but evidence also shows it can also improve your mental wellbeing by raising your self-esteem, helping you to set goals or challenges and achieve them and positively change your mood.



@BethsGrammar



Beths Grammar School



@BethsGS

# MESSAGE FROM THE HEADTEACHER

## 3. Learn new skills

Research shows that learning new skills can also improve your mental wellbeing by boosting self-confidence and raising self-esteem, helping you to build a sense of purpose and help you to connect with others. Even if you feel like you do not have enough time, or you may not need to learn new things, there are lots of different ways to bring learning into your life.

## 4. Give to others

Research suggests that acts of giving and kindness can help improve your mental wellbeing by creating positive feelings and a sense of reward, give you a feeling of purpose and self-worth and help you connect with other people.

## 5. Pay attention to the present moment (mindfulness)

Paying more attention to the present moment can improve your mental wellbeing. This includes your thoughts and feelings, your body and the world around you. Some people call this awareness "mindfulness". Mindfulness can help you enjoy life more and understand yourself better. It can positively change the way you feel about life and how you approach challenges.

The School has held a wellbeing week for the past four years in the last week of November in recognition that by week 12 of a very long Autumn Term, all of the School Community need to come together and reflect upon how we can look after each other, refocus our energies and appreciate each other for who we are.



@BethsGrammar



Beths Grammar School



@BethsGS

# MESSAGE FROM THE HEADTEACHER

The School's Wellbeing Week Programme includes :

- Literacy focus linking together language and wellbeing this year.
- Form time activities - 5 Ways to Wellbeing, using words to comfort and cheer people up, RE activity looking at how words are used in religion to provide comfort, wellbeing questionnaire.
- Promoting the Five Ways to Wellbeing throughout the week : Connect, Be Active, Take Notice, Enjoy Learning and Give to Others.
- Whole school Wellbeing Assembly (KS3/4/5) – Words of Wellbeing.
- Mental Health ambassadors Wellbeing Assembly.
- Turn it off Tuesday – 24 hours without using mobile phones
- Board games in rooms over lunchtime (KS3/4).
- PSHCE with wellbeing starting activity.
- Subject Activities in lessons.
- Spoken word Celebration in the Hall – with prizes!!!!
- Give to Others Day on the Friday.

On Thursday we hold the second of our Top Universities Evening which again will be virtual and this time will focus on Year 11 to prepare them for Oxbridge, Entrance tests such as BMATs and courses at Russell Group universities. We are pleased that more and more of our students consider and are able to successfully apply for courses at Russell Group University. In summer 2021, over a third of our students in our very large sixth form gained a place at such an institution.



@BethsGrammar



Beths Grammar School



@BethsGS

# MESSAGE FROM THE HEADTEACHER

## UCAS outcomes for Beths Grammar School over the past three years

|                                    | 2019<br>Exams | 2020<br>CAGs | 2021<br>TAGs |     |     |     |
|------------------------------------|---------------|--------------|--------------|-----|-----|-----|
| <b>Total applications</b>          | <b>206</b>    | <b>263</b>   | <b>325</b>   |     |     |     |
| Got into firm                      | 44%           | 43%          | 53%          |     |     |     |
| Got into insurance                 | 24%           | 26%          | 10%          |     |     |     |
| Got in via clearing                | 19%           | 22%          | 28%          |     |     |     |
| <b>Proportion at University</b>    | <b>87%</b>    | <b>91%</b>   | <b>91%</b>   |     |     |     |
| Apprenticeships/withdrew from UCAS | 13%           | 9%           | 9%           |     |     |     |
| <b>Russell Group</b>               | <b>20%</b>    | <b>25%</b>   | <b>34%</b>   |     |     |     |
| Other more selective*              | 31%           | 51%          | 18%          | 43% | 11% | 45% |
| Kent and Canterbury                | 13%           | 3%           | 5%           |     |     |     |

\* Includes the likes of Aberdeen, Aston, Bath, Brunel, City, Essex, Hull, Goldsmiths, Kent, Lancaster, Leicester, Loughborough, Reading, Royal Holloway,

At the end of the week we creep into December and the official run-up to Christmas really begins, although looking around locally, some have already got a massive headstart.

Many thanks  
Richard Blyghton



@BethsGrammar



Beths Grammar School



@BethsGS

# COVID TESTING

In line with government guidelines, students are encouraged to test at least twice a week and record their results on the school's TestRegister website via the email sent to you.



The poster features a background image of two young men, one in an orange hoodie and one in a blue hoodie, walking outdoors. The text is overlaid on this image. In the top left corner is the HM Government logo. In the top right corner is the NHS Test and Trace logo. A large yellow box in the center contains the main message. At the bottom, there is a call to action and a website link.

HM Government

NHS  
Test and Trace

**Rapid Covid-19 testing twice a week will help us stay ahead of the virus**

Report your test result each time, whether it's positive, negative or void.

Test at home, report online and keep life moving. **GET YOUR TESTS FROM SCHOOL OR COLLEGE**

[www.gov.uk/report-covid19-result](http://www.gov.uk/report-covid19-result)



@BethsGrammar



Beths Grammar School



@BethsGS

# YEAR 12 BFI LA HAINE WEBINAR

On Wednesday 15th November, our Year 12 French class attended a webinar by the British Film Institute on the film 'La Haine', which we will be studying as a part of our A level course.

After having watched La Haine at home individually, the webinar was the perfect introduction to exploring the deeper meaning behind each scene.

The film centres around three young men who have grown up in the notoriously dangerous Parisian suburbs, where crime and oppressive policing keep tensions high. The film follows the violent riots that break out after a young man named Abdel is beaten unconscious while in police custody.

The webinar was conducted entirely in French and we were given booklets with activities to complete throughout the event. We analysed several scenes from the play, learnt about the French slang *verlan*, where the syllables in a word are inverted, and discussed the reason behind the stylistic choices that the director made, such as making the film black and white and showing the time intermittently throughout the film. We ended with the conclusion that the themes that the film deals with of police brutality and racism, are just as relevant today as they were when the film was released in 1995.



@BethsGrammar



Beths Grammar School

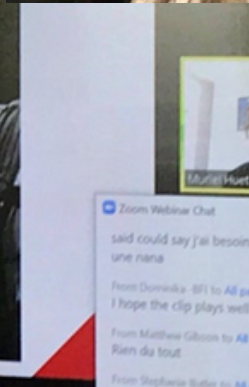
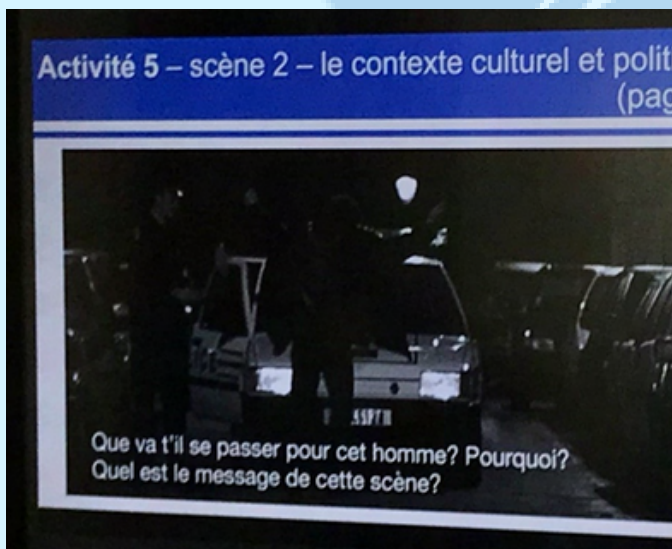


@BethsGS

# YEAR 12 BFI LA HAINE WEBINAR

This event gave us a great insight into the film that we will soon be studying in class. Thank you to Mrs James for organising the event and to Ms Harris for kindly providing us with French refreshments like croissants and pain au chocolats during the event. These were greatly appreciated!

By Laura P and Amy G



@BethsGrammar



Beths Grammar School



@BethsGS

# CHINESE EXPERIENCE CLUB

On Monday 22nd November during Chinese Experience Club, students got the opportunity to learn about and play Chinese Go.



Next week, students will be learning about and making Chinese Dragons.

中华文化体验课

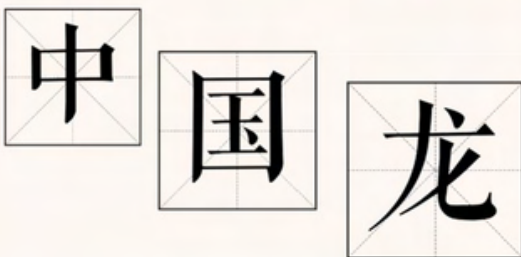
Chinese Experience Club

Monday Lunchtime

(29th NOVEMBER)

S18, open to Year 7, 8, 9

**Chinese  
Dragon**



@BethsGrammar



Beths Grammar School



@BethsGS



# JACK PETCHEY AWARD

A big thank you to Jack B who donated his Jack Petchey Award money to the PE Department, to purchase some new senior football kits!



# AIR AMBULANCE KENT SURREY SUSSEX

Air Ambulance KSS is an independent charity that provides 24/7 emergency medical care. They are made up of highly skilled doctors, paramedics, pilots, dispatchers and trustees. To help support Air Ambulance KSS, Year 7 are collecting crisp packets, that will be recycled to help raise funds for them.

To find out more about the amazing work the Air Ambulance KSS, does, please click here <https://www.aakss.org.uk/about-us/>



Air Ambulance  
Kent Surrey Sussex



**RECYCLE YOUR CRISP PACKETS HERE!**



Your used crisp packets will be turned into life-saving funds for Air Ambulance Kent Surrey Sussex

**KEEP US FLYING HIGH!**

for full details of the scheme visit:  
[aakss.org.uk/crisppacketrecycling](https://www.aakss.org.uk/crisppacketrecycling)



# YEAR 7 RUGBY

Well done to Wickham who are this years House Rugby Champions! A huge well done to everyone who took part!



Well Done Wickham!

|     |          |     |
|-----|----------|-----|
| 1st | Wickham  | 120 |
| 2nd | Brampton | 100 |
| 3rd | Abbey    | 80  |
| 4th | Eardley  | 60  |
| 5th | Cray     | 40  |
| 6th | Hurst    | 20  |



@BethsGrammar



Beths Grammar School



@BethsGS

# MUSICIAN OF THE WEEK

This weeks Musician of the Week is: Ashwanth, Year 8

Here is a really excellent video of Ashwanth playing a lovely song on the piano.

Link to video: [https://www.youtube.com/watch?v=vahoOzLMPQM&list=PLxoCR9m\\_J-zcmrvj75ZIfUnV3janAF\\_Dh&index=6](https://www.youtube.com/watch?v=vahoOzLMPQM&list=PLxoCR9m_J-zcmrvj75ZIfUnV3janAF_Dh&index=6)



Any student who would like to be featured in the Beths 'Musician of the Week', whether it be a group or solo performance or a composition, please send your entries to Ms Marriott [msmarriott@beths.bexley.sch.uk](mailto:msmarriott@beths.bexley.sch.uk)



@BethsGrammar



Beths Grammar School



@BethsGS

# BETHS CAREERS

**Beths Careers and  
Guidance Department**



Calling all parents! Would you like to be part of our Careers speaker programme?

The Careers team are organising a series of talks for the Sixth Form students, focussing on different professions and career paths. The first few events have gone well, and we're looking to expand the programme in 2022. The talks take place on a Wednesday afternoon, from 2-3pm, with a speaker presentation followed by Q&A from the students. The events are recorded so that they can be made available to students that cannot attend, and other year groups. So far all of our speakers have been able to attend and speak with the students face-to-face, but we are able to accommodate presentations on Zoom or Teams.

Would you be interested in giving a talk as part of our careers programme? If you feel able to contribute to the life of the school in this way, then do please contact us on [careers@beths.bexley.sch.uk](mailto:careers@beths.bexley.sch.uk).



@BethsGrammar



Beths Grammar School



@BethsGS

# EXTRA-CURRICULAR CLUBS

There are a range of activities/ clubs on offer for students. These activities run before school, lunch time, and after school. Below is a list of all activities currently offered. Please speak to the member of staff listed below if you would like more information.

|                                 | MONDAY  | TUESDAY                                     | WEDNESDAY  | THURSDAY   | FRIDAY   |
|---------------------------------|---|---|--|--|--|
| Before school<br>8 – 8.30am     | KS3 Basketball  | KS3 Basketball                              | KS3 Basketball   | KS4 Basketball   | KS4 Basketball   |
| Lunch time<br>KS3 12.00 – 13.00 | Year 9 Basketball (Mr Temple)<br><br>Chess club – Week 1- All key stages in A2, Week 2: KS3 Online (Mr Runacres)<br><br>Chinese Experience Club – S18 |   | Year 8 Basketball ALL (Mr Webb) ODD WEEK<br><br>Year 7 Rugby (Mr G.S + Mr Smith)   | KS3 Badminton (Mr Temple)<br><br>KS3 Drama – P3 ( Ms Grady)<br><br>Year 7 and 8 robotics club – A6 (Mr Morgan)<br><br>Year 8 Design Technology club – A8/A9 (Mr Knott) | Year 7 Basketball (Mr G.S + Mr Smith)<br><br>Year 8 Football – Team Training (Mr Webb) ODD WEEK ONLY |
| KS4 12.50 – 13.50               | Year 10 Basketball (Mr Smith)<br><br>Chess Club - Week 2 KS4 and KS5, A2. (Mr Runacres)   | Year 11 Basketball                          | <u>Sixth form:</u> Football, Rugby, Basketball, Netball (Ms Deane/Ms Ewing)<br><br>Eco-club: KS4/5 –A7A (geography department) | Girls Fitness Sports Hall (Ms Ewing)   | Sixth form Basketball (Team)<br><br>LGBTQ+ Society – S15 (Ms Harris)                                 |
| After school<br>3.20 – 4.45pm   | Rugby Training Years 7 – 10<br><br>KS3 Badminton (Mr Healy)   | Year 8 Basketball – Team Training (Mr Webb) | <u>Warhammer Club, S1 (Mr Turnbull)</u>  | KS3 Football (ALL)<br><br>Year 7 Basketball<br><br>Year 7 STEM club -S12 (Mrs Sarkar)<br><br>Choir (all staff and students invited) – P12 (Ms Marriot)                 |  |

The full list of clubs and activities can be found on the school's website

<https://www.beths.bexley.sch.uk/page/?title=Extra+Curricular+Activities&pid=50>



@BethsGrammar



Beths Grammar School



@BethsGS

# RESULTS AND FIXTURES

## Results for week ending 26th November:

| FOOTBALL   |  |                    |   |      |           |
|------------|--|--------------------|---|------|-----------|
| 23.11.21   |  | U15A               | V Sanders School                          | Away | Won 4 - 6 |
| 23.11.21   |  | U13A               | V Harris Garrard Academy                  | Away | Won 2 - 5 |
| 24.11.21   |  | 1 <sup>st</sup> XI | V Langley Park School for Boys            | Away | Won 0 - 1 |
| 24.11.21   |  | 2 <sup>nd</sup> XI | V Christ the King Sixth Form College      | Home | Postponed |
| 25.11.21   |  | U12B               | V Bexley Grammar School                   | Away | Won 0 - 6 |
| BASKETBALL |  |                    |   |      |           |
| 22.11.21   |  | U13A               | V St John's Catholic Comprehensive School | Away | Postponed |
| RUGBY      |  |                    |   |      |           |
| 24.11.21   |  | 1 <sup>st</sup> XV | V Simon Langton Grammar School for Boys   | Away | Cancelled |

## Fixtures for week commencing 27th November:

| FOOTBALL   |  |                    |   |      |               |
|------------|--|--------------------|---|------|---------------|
| 29.11.21   |  | U12A               | V Hurstmere Foundation School for Boys        | Away | Cancelled     |
|            |  | U13A               | V Bishop Justus Church of England School      | Away | KO TBC        |
| 30.11.21   |  | U15A               | V St Columba's                                | Away | KO 15:00      |
|            |  | U13B               | V Trinity Church of England School,           | Away | KO 15:00      |
| 01.12.21   |  | 1 <sup>st</sup> XI | V Langley Park School for Boys                | Home | KO 14:00      |
|            |  | 2 <sup>nd</sup> XI | V Christ the King Sixth Form College          | Home | KO 14:30      |
| BASKETBALL |  |                    |   |      |               |
| 29.11.21   |  | U14A               | V Trinity Church of England School, Belvedere | Away | Tip Off 15:45 |
| 30.11.21   |  | U18A               | Ravens Wood School                            | Home | Tip Off 16:00 |
| RUGBY      |  |                    |   |      |               |
| 27.11.21   |  | U12A               | V Woodlands School                            | Home | KO 10:00      |
|            |  | U13A               | V Woodlands School                            | Away | KO 10:00      |
|            |  | U14A               | V Woodlands School                            | Away | KO 10:00      |
| 01.12.21   |  | 1 <sup>st</sup> XV | V Simon Langton Grammar School for Boys       | Home | KO 14:30      |

\*Please note that some matches may be cancelled/postponed and therefore we ask you to keep an eye on the SOCS website.

Beths Grammar School | Sports Home ([bethssport.co.uk](http://bethssport.co.uk))



@BethsGrammar



Beths Grammar School



@BethsGS

# FIXTURE HIGHLIGHTS

Highlights of the various games our students played over the past week. Well done for all your hard work and dedication, you've done us all proud!

Please see link to the video highlights made by Mr Webb: <https://www.youtube.com/watch?v=Xyc7ccKu6uI>



Link to full sports bulletin for 20th November to 26th November:

<https://www.beths.bexley.sch.uk/page/?title=Sports+Bulletin&pid=393>



# MATCH REPORT

**Thursday 25th November 2021**  
**Beths U12B v Bexley GS (North Kent Cup)**



On Thursday, the B team travelled away to Bexley Grammar School, in the Area cup. As soon as the game kicked-off, we were on top and began to create good chances, coming close to scoring on a number of occasions. Soon after this, we scored a great goal from Lucas to set the mark. We dominated the first half, and another goal came through a fantastic chip from Max. At the end of the first half, we got a penalty after a handball from one of their defenders. Lucas stepped up and the penalty was saved by their goalkeeper. We went into halftime with the score 2-0 to us.

After a team talk with Mr Waite and Mr G.S, we began the second half, picking up where we left off with a goal from Tobenna. We continued to pile on the pressure, and they scored an own goal. We played well until the end of the game, with Tobenna netting 2 more goals to complete his hattrick (including a wonder strike into the top corner) and we hit the bar 3 times.

Overall, it was a very strong performance from us, with the game finishing 6-0 to Beths.

Man of the match: was Tobenna A  
Match Report written by Noah B



@BethsGrammar



Beths Grammar School



@BethsGS

# LUNCH MENU W/C 29TH NOVEMBER

INDEPENDENTCATERING | EDUCATER LIMITED



## MONDAY 29 NOVEMBER

**MAIN** Traditional Beef Lasagne and Garlic and Herb Bread,  
with Roasted Winter Squash and Green Beans

**VEGETARIAN** Vegetable Chilli and Rice with  
Roasted Winter Squash and Green Beans

**STREET FOOD** Chinese

**DESSERT** Cinnamon Sponge with Butterscotch Sauce

## TUESDAY 30 NOVEMBER

**MAIN** Our Speciality Curries with a choice of Vegetable, Meat and  
Vegan Dishes served with Traditional Garnishes and Accompaniments

**STREET FOOD** Mexican

**DESSERT** Chocolate Brownie with Cream

## WEDNESDAY 1 DECEMBER

**MAIN** Roast Gammon with Pineapple with Roast Potatoes,  
Swede and Carrot Mash and Fresh Broccoli

**VEGETARIAN** Golden Winter Vegetable Pie with Roast Potatoes,  
Swede and Carrot Mash and Fresh Broccoli

**STREET FOOD** Caribbean

**DESSERT** Sticky Toffee Apple Crumble with Custard

## THURSDAY 2 DECEMBER

**MAIN** Chicken Burrito served with Mixed Salad  
and Red Cabbage Slaw or Seasonal Vegetables

**VEGAN** Sweet Potato and Vegetable Cobbler with Parsley Potatoes,  
Fresh Carrots and Garden Peas

**STREET FOOD** Thai

**DESSERT** Lemon Cheesecake

## FRIDAY 3 DECEMBER

**MAIN** Battered Cod and Chips, served with Mushy Peas,  
Baked Beans, Fresh Salad and Sauce Tartare

**VEGAN** Mozzarella and Basil Calzone Pizza served with Chips,  
Baked Beans and Fresh Salad

**STREET FOOD** Spanish

**DESSERT** Fresh Fruit Salad and Oatie Cookie

**AVAILABLE DAILY** FRESH CHEF'S SALAD - WHOLE GRAIN BREAD - GRAB AND GO POT MENU



### THE DELI

FRESH CUT SANDWICHES - ROLLS - WRAPS - PITTAS - BAGUETTES  
SEE THE BLACK BOARDS FOR SOUPS, THEME DAYS  
AND THE CHEF'S SPECIAL

**\*ALL OUR MENUS ARE TREE NUT AND PEANUT FREE**

INGREDIENTS CONTAINING GLUTEN (INDICATED BY THE NUMBER 1 ON THE MENU) WILL CONTAIN WHEAT, OATS, BARLEY, SPELT, RYE OR KAMUT, OR A COMBINATION THEREOF. IF YOU HAVE ANY ALLERGEN CONCERNS PLEASE SPEAK TO THE CATERING MANAGER. WHILST WE DO NOT BRING WHOLE NUTS OR INGREDIENTS WITH NUTS INTO OUR KITCHENS, SOME PRODUCTS ARE SUBJECT TO 'MAY CONTAIN' STATUS IN MANUFACTURING

WE ONLY USE



FRESH MEAT



FREE RANGE EGGS



MSC FISH



ORGANIC MILK



LOCAL PRODUCE



WHOLEMEAL PASTA

INDEPENDENTCATERING.CO.UK  
EDUCATERLIMITED.COM



@BethsGrammar



Beths Grammar School



@BethsGS

# LITTERING AROUND SURROUNDING ROADS

We are working with the local community to keep our streets around Bexley clean and litter free. We would like to remind all students to keep Beths and the surrounding neighbouring roads clean and litter free. Please can we remind students when they're walking and eating, to not drop their litter on the floor, but instead to put it in the bin or pockets and bags until a bin can be used.

Please can students also look before crossing a road especially while crossing by the library. Please stop and look for the road to be clear before crossing.

Lastly, when walking in large groups please can students remember to give way to other people on the pavement, especially those with small children or elderly/vulnerable people. The pavements in the village are not wide enough to accommodate groups congregating and allow others to pass.



@BethsGrammar



Beths Grammar School



@BethsGS

# BETHS PARENTS ASSOCIATION:

## 1.1. Parents Associations' latest events

**2. Raising money for these thrilling projects and Giftaid it on Black Friday Sales!**

**3. Simple ways to donate: Amazonsmile, Easyfundraising and Parents & Friends of Beths PA**

At Beths Parents Association, raising funds and improving the learning environment of our children is our aim. We have set up an annual campaign with a donation link to raise funds for our fantastic projects, please visit our website for full details: <https://www.beths.bexley.sch.uk/page/?title=Parents+Association&pid=162>

## 1. Latest Parents Associations' events

1. The purpose is to raise funds for Beths Grammar school.

2. Payment is made into the parents association's bank account and funds are used to meet the funding requests from Beths Grammar School for things like; musical instruments, sport equipment, school library resources and opportunities for students as may arise

3. It is also a monthly draw with a cash prize.



**Beths Parents  
Association  
Monthly Draw**



Support the Beths Parents Association by participating in our Monthly Draw

You have the chance to win either a £20 or £10 monthly prize and £50 quarterly prize whilst supporting our fundraising for pupils.

Simply purchase one number for £6 and you can purchase up to 20 numbers maximum for £120 for your chance to win! This enters you in to all 12 draws from January to December. |

Go to link below to purchase your numbers or scan above QR Code (📄)

<https://checkout.square.site/merchant/MLZGAFJKCFPPY/checkout/FVTED45TSCIMO4TBBO2KZBDO>

All proceeds to Beths Parents Association Registered Charity Number 801836  
For full details on terms and conditions, see our PA web page



@BethsGrammar



Beths Grammar School



@BethsGS

# BETHS PARENTS ASSOCIATION:

It is simple and quick to play! Just follow the two steps below:

1. Complete the membership form and return it via email to: [beths.parents.association@gmail.com](mailto:beths.parents.association@gmail.com), it is important that you complete and submit this form to us so that we are able to communicate to you any winnings

Our TARGET is to sell 300 tickets, we have already sold nearly 100. Thank you for helping us meet our target!

Thank you to all families who have already bought their numbers!



**Beths Grammar School**  
an 11 - 18 selective school with academy status  
Headteacher: [Mr R J Blaghton](#)  
Hartford Road, Bexley, Kent DA5 1NE Tel: 01322 556538 Fax: 01322 621212  
Email: [admin@beths.bexley.sch.uk](mailto:admin@beths.bexley.sch.uk) Website: [www.beths.bexley.sch.uk](http://www.beths.bexley.sch.uk)



**2022 Monthly Prize Draw Entry Form**

Please complete and return to [beths.parents.association@gmail.com](mailto:beths.parents.association@gmail.com)

MONTHLY DRAW DETAILS:

FORENAME:

SURNAME:

PHONE NO:

E-MAIL ADDRESS:

SON/DAUGHTER'S NAME:

YEAR & FORM:

AMOUNT OF NUMBERS PAID FOR:

DATE PAID:

NB: By completing this form, you agree to the terms and conditions set out above and consent to the PA processing the information provided in this form, in accordance with our privacy policy which can be found on our website.

Winners will be posted on the school Blog page after the draw is made at each monthly PA meeting.  
Beths Parents Association is a registered charity (801836)



@BethsGrammar



Beths Grammar School



@BethsGS

# BETHS PARENTS ASSOCIATION:

- Pay for your number or numbers for the full year upfront (i.e. £6 per number per annum up to a maximum of £120 for 20 numbers) by clicking the link below or scanning the QR code below:

<https://checkout.square.site/merchant/MLZGAFJKCFPPY/checkout/FVTED45TSCIMO4TBBO2KZBDO>

- Once your completed form and payment have been received; you will receive an email confirmation with your allocated number or numbers.

- Please ensure that you send us confirmation of payment along with the completed form to [beths.parents.association@gmail.com](mailto:beths.parents.association@gmail.com) Please submit your applications and payments by the latest 11th January 2022 to be included in the January 2022 draw.

- Visit the PA section of the Beths Grammar School Website for more details: <https://www.beths.bexley.sch.uk/page/?title=Parents+Association&pid=162>



@BethsGrammar



Beths Grammar School



@BethsGS

# BETHS PARENTS ASSOCIATION:

## Reuse, Reduce, Recycle Scheme: Our brand new 3Rs scheme

### Our virtual Nearly New PTA Uniform Shop is now fully open!

We are asking for any donations of **nearly new blazers and unembroidered PE kits**. If you have any of the specified school uniform items that your son has grown out of, please do consider donating it to our PTA Uniform Shop. Simply drop them off at the School Reception. We are aiming to sell these items for you to purchase once we have received donations and can provide an inventory. If you require any items, please email the PTA via [beths.parents.association@gmail.com](mailto:beths.parents.association@gmail.com).



### Coming soon...

## Collection of old foreign currency notes or coins campaign



We are actively working with the school on the coming exciting and educational project in the 3Rs scheme. The Foreign Coins Collection is an easy and enjoyable fundraising idea which will be organised through competitions and in close collaboration with the students and our local community.

Please start searching for your old currencies now and put them in a safe place, but most importantly **SPREADING THE WORD** around you. Your ideas on this project are welcome!

October half term is over now, so we hope you have kept your foreign coins!



@BethsGrammar



Beths Grammar School



@BethsGS

# BETHS PARENTS ASSOCIATION:

## 2 . Raising money for these thrilling projects!



**£10,000  
goal**

**£1,719 already  
raised**



- Outdoor chess tables - £2, 000 **Help us Reach our goal of £550!!!**  
<https://cafdonate.cafonline.org/16829>
- Radio Beths - £5, 000 **Share the NEWS and DONATE HERE!!!!**  
<https://cafdonate.cafonline.org/17268>
- Musical instruments - £2, 000 **DONATE HERE!!!!**  
<https://cafdonate.cafonline.org/17270>
- Lighting for drama - £1, 000 (£29 raised) **DONATE HERE!!!!**  
<https://cafdonate.cafonline.org/17269>

Please remember to add the Gift Aid by ticking the box within your donations.  
Thank you!

Gift Aid can increase the total amount given; extra 25p for every £1 you give. For example with a £100 donation, the PA will receive £125.

\*Gift Aid is important for Beths Parents Association and means hundreds of pounds extra go to the school's project and benefit our children. Each time an eligible taxpayer donates and forgets to tick the Gift Aid box, the charity misses out.

\*Higher rate taxpayers can also claim part of the tax back from HMRC on their donations.



@BethsGrammar



Beths Grammar School



@BethsGS



# BETHS PARENTS ASSOCIATION:

## 3. Simple and quick ways to donate.

Help us raise funds at no cost for you! It is simple and quick!

### 1. Generate even MORE funds for Beths Parents Association while doing your shopping

Please go to [smile.amazon.co.uk](https://smile.amazon.co.uk) and search for Beths Parents Association. You need to start each of your shopping sessions at the URL [smile.amazon.co.uk](https://smile.amazon.co.uk).

It doesn't cost you anything!



### 2. Continue generating donations with Easyfundraising

If you shop elsewhere online, please join Easyfundraising. Again it costs nothing to you and Beths PA will automatically receive a donation. You can sign up at [www.easyfundraising.org.uk/BethsPA](https://www.easyfundraising.org.uk/BethsPA) and we will receive a donation anytime you shop. If you are eligible, please also give gift aid to maximise the donation.



@BethsGrammar



Beths Grammar School



@BethsGS

# BETHS PARENTS ASSOCIATION:

## Friends and Sponsors of Beths Parents Associations

We would like to say a special THANK YOU to our sponsors and William Jones who have generously donated towards the second edition of Beths Parents Association Online Chess Tournament, with cash functions and prizes for the winners.



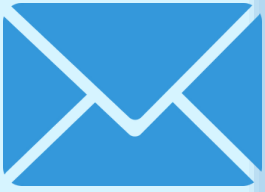
All your support is appreciated,  
every pound will help us to get closer to our target goal

# BETHS PARENTS ASSOCIATION:



Next meeting: on Tuesday 14th December,  
2021 @ 7.30pm - Zoom

Please keep checking on our website and social media pages  
for upcoming events



[beths.parents.association@gmail.com](mailto:beths.parents.association@gmail.com)



[Beths Parents Association](http://www.bethsgrammarpa.co.uk)



@bethsgrammarpa



@BethsGrammar



Beths Grammar School



@BethsGS

BETHS GRAMMAR SCHOOL,  
HARTFORD ROAD  
BEXLEY  
KENT  
DA5 1NE

**Email Address: [admin@beths.bexley.sch.uk](mailto:admin@beths.bexley.sch.uk)**

**Email Address (to be used for items/concerns of a more  
'sensitive' nature): [headspa@beths.bexley.sch.uk](mailto:headspa@beths.bexley.sch.uk)**

**Telephone Number: 01322 556538**

**Fax Number: 01322 621212**