

### Sixth Form Building Update

Since recommencing on site on 9<sup>th</sup> October, Hutton's have been busy preparing the ground and laying foundations. Despite some unexpected services requiring diverting and Storm Ciaran's best efforts to disrupt the works, the last row of foundation pits were poured with cement on schedule this week.

At the start of next week, Hutton will prepare the ground ready for the delivery of the mobile crane on Wednesday 15<sup>th</sup> November. Later the same day a delivery of galvanized steels will be received, and the crane will start to erect the steels to form the building frame. This will continue over a period of two weeks in a rotational pattern until the frame is completed (an increase in noise level can be expected). The diagram below details the programme with the first steels (shown in red) forming a front section of the building (facing the main teaching block), followed by :

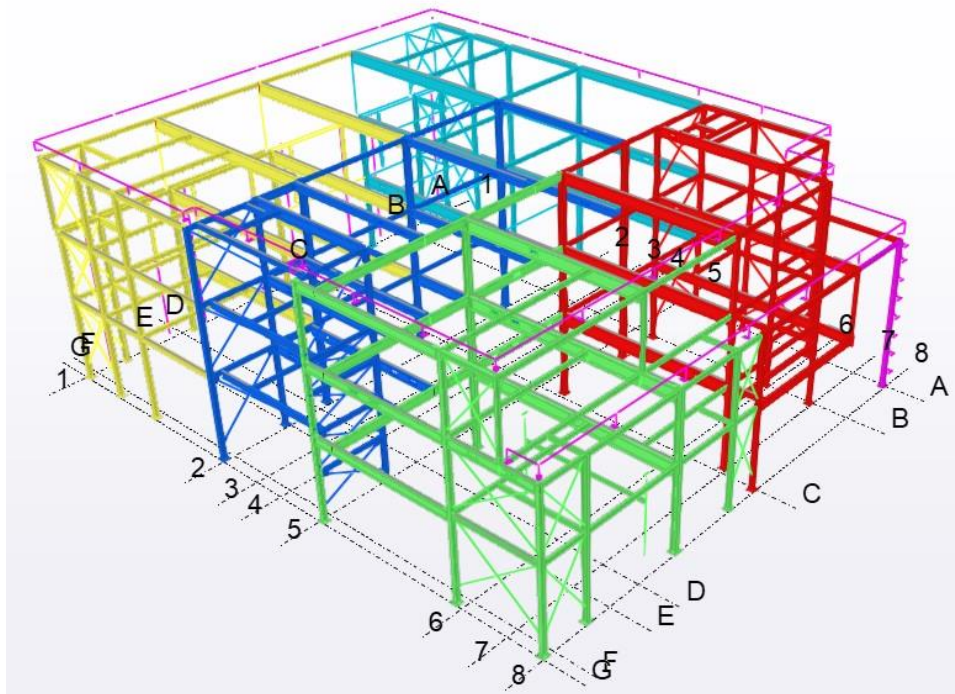
Green load delivered on Friday 17.11.23

Blue load delivered on Tuesday 21.11.23

Cyan load delivered on Thursday 23.11.23

Yellow load delivered on Monday 27.11.23

Purple load forming the balance of the galvanized steels tbc



A clear Traffic Management Plan has been agreed with Hutton. The steel deliveries will be directed from the A2 along Thanet Road, Parkhill Road , Parkhurst Road and then through the West Gate to avoid congesting Hartford Road. The steels are also scheduled to be delivered on “short” 10m (trailer length) articulated lorries to ensure minimum disruption.

Drainage and ducting will commence on 27.11.23 for two weeks, along with the substructure (underground) blockwork on the 4.12.23, which weather dependent should be finished by the start of the school holidays.

Between 2.1.24 and 2.2.24 the block and beam ground floor, 1<sup>st</sup> and 2<sup>nd</sup> floors along with the roof planks will be completed. A mobile crane will be on site for this period.

As many of you are aware, the school has been running at electrical load capacity for some years, which has prevented us supplying heater units to some areas of the school. The demolition of the old LRC has not provided enough additional capacity to resolve the heating shortages issues. As part of the project, the school will be building a new substation on the boundary of the school site next to the A2 slip road, to increase our electrical capacity and to future proof for the coming years. As with all planning applications the process can be very protracted, but the design and legal are well underway, with an anticipated completion next Autumn.