



Beths Grammar School

Excellence - Community - Respect - Nurture



Week Ending Friday 14 February 2020

Coronavirus and what we should be aware of

Earlier in the week, an email was sent home to all parents reminding you of the Department for Education (DfE) advice regarding the Coronavirus and the recommendations for anyone returning from countries of concern and what to do should you feel that you may have the symptoms.

On Thursday we received further advice from the DfE, updating their previous advice, and this is detailed below:

The government is monitoring Coronavirus and taking action at home and abroad. The risk to individuals remains low.

Advice to those who have travelled recently

Public Health England has changed the advice for individuals who have travelled recently as follows:

Travellers from Wuhan and Hubei Province

If you have travelled from Wuhan or Hubei Province to the UK in the last 14 days you should immediately:

- *stay indoors and avoid contact with other people as you would with the flu*
- *call NHS 111 to inform them of your recent travel to the area*

Please follow this advice even if you do not have symptoms of the virus.

Travellers from other parts of China and other specified areas

This advice applies to travellers who have returned to the UK from the following areas:

- *Elsewhere in China*
- *Thailand*
- *Japan*
- *Republic of Korea*
- *Hong Kong*
- *Taiwan*
- *Singapore*
- *Malaysia*
- *Macau*

If you have returned to the UK from any of these areas in the last 14 days and develop symptoms of cough or fever or shortness of breath, you should immediately:

- *stay indoors and avoid contact with other people as you would with the flu*
- *call NHS 111 to inform them of your recent travel to the area*

Encouraging good hygiene

As always, if you have symptoms of a cold or flu, then there are measures you can take to stop germs:



- *always carry tissues with you and use them to catch your cough or sneeze. Then bin the tissue, and wash your hands, or use a sanitiser gel.*
- *wash your hands often with soap and water, especially after using public transport. Use a sanitiser gel if soap and water are not available.*
- *avoid touching your eyes, nose and mouth with unwashed hands.
avoid close contact with people who are unwell.*

Latest information

Updates on Coronavirus:

<https://www.gov.uk/coronavirus>

Travel advice for those travelling and living overseas:

<https://www.gov.uk/guidance/travel-advice-novel-coronavirus>

Public Health England blog:

<https://publichealthmatters.blog.gov.uk/2020/01/23/wuhan-novel-coronavirus-what-you-need-to-know/>

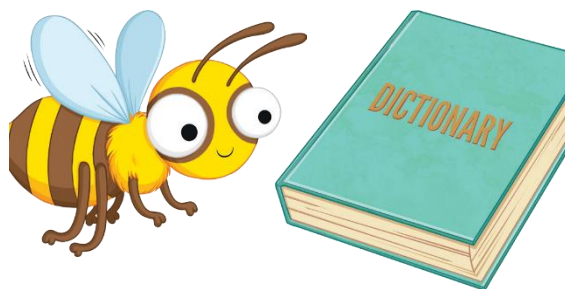
As a school we continue to remain vigilant and up to date with any information and guidance shared by both the DfE and the Foreign Office/WHO.

If you believe that your son or daughter may have caught Coronavirus, we would ask that you follow all the advice that is being given out at the time and alert the school. It is not our intention to close the school at any time but we will, of course continue to keep a watchful eye on the situation.

Spelling Bee – Year 7 and Year 8

Congratulations to all finalists.

The final will take place in the Hall at lunchtime on Friday 6th March – full details after half term.



Results of the Year 9 Debating Competition

Well done to all the excellent speeches made throughout this competition. The final standings and house points are:

Cray – 1 st Place	120
Brampton – 2 nd Place	100
Eardley – 3 rd place	80
Hurst – 4 th place	60
Abby – 5 th place	40
Wickham – 6 th place	20





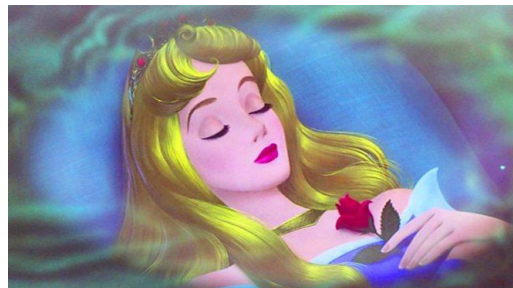
Drama Production Prep

This week the production team installed a brand new custom built "drop curtain" on the stage. This curtain allows for quick scene changes and is operated by a member of crew backstage during performances. The backdrop will be painted for scenes for The Wizard Of Oz, but can very easily be re-used for future productions.



Old Bexley Panto – a message from Old Bexley Primary School's PTA

Don't forget next week is Old Bexley Primary Schools pantomime! Have you booked your tickets yet? The show will be on Tuesday 18 until Saturday 22 February. This promises to be a wonderful interpretation of the classic, Sleeping Beauty.



Tickets can be bought online by clicking [THIS LINK](#), or by copying this address into your browser:

<https://www.pta-events.co.uk/old-bexley/index.cfm?event=shop#.Xh9aG8j7TIU>

PARENTS ASSOCIATION

Monthly Draw - Announcement of Winners for January and February 2020

January 2020

1st Prize	Ticket No.4	Jack, Year 8
2nd Prize	Ticket No.18	Benji, Year 11

February 2020

1st Prize	Ticket No. 35	Eliot, Year 11
2nd Prize	Ticket No. 78	Robert, Year 11

Beths Parents Association kindly invite young and old to take part in their next Quiz Night. So save the date and book your table as soon as possible to spare you disappointment!





Beths Parents Association QUIZ NIGHT

When?
16th May 2020

Time
7:30pm

Where?
Beths Grammar School
Main Hall

Remember to bring your friends to form a team to combat against other teachers and parents in a series of fun questions, while also raising money for the school!

Tickets
Tickets are £5.00 an adult and children (U16) go for £2.50 each. Book now and pay on the evening. Maximum 8 people a team.

If you have a team of 4 and would like to join someone else let us know and we will help you team up with another group.

Bring some snacks and drinks along, to share with those clever friends and family. The PA team will be selling refreshments, as well as raffle tickets on the night, so bring some cash!

To book a table email:
beths.parents.association@gmail.com

Facebook:
Beths Grammar Parents Association

Students Arriving on School Site

We would like to continue to remind you that we are struggling to cope with the number of students arriving on site prior to 8.00am in the morning. Below is an extract from a Blog earlier in January, which we would like to remind you about.

Wednesday 22 January – Road and Parking Concerns

As you know, each week in the blog we ask that parents be considerate of our neighbours when dropping or picking up their sons and daughters at the school.

Unfortunately, on Wednesday at 8.15am, our fire alarm went off and as with school procedure, we had to evacuate those in school to our 'muster point'. As is also procedure, students and cars were not allowed to enter the school site until we were advised the site was clear. Due to cars blocking Hartford Road, the Fire Brigade were unable to access the school site. Fortunately, this was a false alarm, however if it hadn't been, the fact that the Fire Brigade were not able to get to the school could have resulted in such dire consequences, as the loss of life.





*The incident on Wednesday, also highlighted that students are arriving on site before 8am, the earliest permitted time of arrival. If there were to be an incident/emergency before the start of the school day, we would have no record of the students on site or their location, and no first aiders to deal with any accident that may occur. Please ensure that your son or daughter arrives at school **no earlier** than 8am.*

We have also been made aware, on several occasions, of cars blocking neighbours drive ways, and on some occasions, being quite abusive to the residents. Please can we remind you that we are constantly trying to work with our neighbours to ensure we have a good relationship; inappropriate and inconsiderate parking only reflects poorly on the school's reputation.

There is also the issue of when students are dismissed at the end of the day, their vision is obstructed by the number of cars parked along Hartford Road and we have, unfortunately had a number of incidents where students have been injured by cars as they have tried to cross the road.

If parents were to refrain from dropping and picking up their sons or daughters by car, it would greatly eliminate the issue experienced by both the school and our neighbours.

Adverse Weather Conditions

As mentioned earlier in the Blog by the Headteacher, this term is the grimest weather-wise and with the possibility of poor weather being predicted over the coming weeks, we thought a reminder to all, as to our procedures, would be helpful.

In the unlikely event that the school is closed due to adverse conditions we will make every effort to make information available to staff, students and parents by 6.30am. However, it may not always be possible to make the decision by this time, so we would ask you all to be understanding about this.

This information will be available on the following websites:

The school's website www.beths.bexley.sch.uk - a 'yellow sticky' will appear on the front page of our site clarifying whether we are open or shut.

The link <http://map.lgfl.org.uk/opencheck/default.aspx?la=303> to Bexley's School OpenCheck website. Parents without internet access can phone 020 8408 7508 and enter the school's Dfe number, 3035403, to get the same information.





SPORTS SECTION

Results

FOOTBALL				
10.02.2020	Kent Basketball	U17 v HACA	Away	Won 3-0
12.02.2020	1 st XI League	1 st XI v Gravesend GS	Home	Lost 2-0
	2 nd XI League	2 nd XI v Newstead Wood	Home	Won 5-0
RUGBY				
BASKETBALL				
06.02.2020	Kent BB	U17 v Northfleet	Away	Lost 35-64
07.02.2020	Friendly	U12A v Sevenoaks	Away	Won 42-26
		U13 v Sevenoaks	Away	Won 48-38
		U14 v Sevenoaks	Away	Won 48-38

Fixtures

FOOTBALL			
26.02.2020	N Kent Division Two League	2 nd XI v Ravensbourne	Away
27.02.2020	Friendly	U15 v St Columbas	Home
RUGBY			
BASKETBALL			
24.02.2020	Quarter Final Kent Basketball	U14 v Bexley GS	Away
26.02.2020	Friendly	U17 v King Henry	Away
	Quarter Final Kent Basketball	U13 v Trinity	Home
27.02.2020	Quarter Final Kent Basketball	U15 v NTC	Home
28.02.2020	Kent BB	U19 v NTC	Away
VOLLEYBALL			





Emailing the School

Should you need to email the school with items/concerns of a more 'sensitive' nature, please email headspa@beths.bexley.sch.uk rather than the generic admin email address.

Up and Coming Events

Monday 24 February	Year 11 Trial Exams start
Tuesday 25 February	Full Student Council Meeting
Thursday 27 February	Year 9 Parents Evening Booking System open at 10am
Tuesday 3 March	Year 7 Student Council Meeting
Thursday 5 March	Year 13 Parents Evening
Saturday 7 March	Saturday Production Rehearsal