



YOUNG ENTERPRISE: ECOMAZE SMASHES IT!



Since December 2024, a group of dedicated Year 12 students from Beths Grammar School have been participating in the Young Enterprise Company Programme with their innovative company, EcoMaze. The programme challenges students to work collaboratively as a real business—developing a unique product idea, sourcing raw materials, manufacturing, marketing, managing finances, and selling. It's a comprehensive experience that nurtures a wide range of entrepreneurial skills, including:

- Problem-solving
- Leadership
- Communication
- Collaboration
- Creativity

In March, EcoMaze took part in the Young Enterprise East London Trade Fair, held at the historic Greenwich Market. Competing alongside 15 other student companies—including teams from Chislehurst and Sidcup Grammar, and Bexley Grammar—EcoMaze stood out and won Best Trade Stand, thanks to their exceptional presentation, creativity, and professionalism. Special credit goes to Betty E, the team's brilliant Marketing Director, for her contribution to their striking visual identity.



@BethsGrammar



Beths Grammar School



@BethsGS



YOUNG ENTERPRISE: ECOMAZE SMASHES IT!



We are incredibly proud of every student involved—they represented Beths with pride and professionalism throughout.

The team's success didn't stop there. In April, they took part in the Company of the Year Awards, where they faced the challenge of a live interview with a panel of judges, as well as a business presentation in front of an auditorium. Once again, EcoMaze impressed, winning the Marketing Award and Best Company Runner-Up, earning them a spot in the East of London Company Awards.

At this highly competitive regional final, EcoMaze was up against five outstanding companies. They rose to the challenge, delivering a standout marketing campaign and a superb presentation. Their hard work was rewarded with the Sustainability Award and an impressive 3rd place overall.

EcoMaze are hoping to showcase their fantastic work at the Beths 80th Anniversary, where you'll be able to see their innovative product and eye-catching marketing materials for yourself.

Huge congratulations to the students who stuck with the programme through to the end—your resilience, teamwork, and creativity have been truly inspiring.

| Name | Role |
|-------------|------------------------|
| Girik C | MD |
| Henryjoe A | MD/ Sales |
| Tomiwa A | MD |
| Betty E | MD/ Marketing Director |
| Semilore F | Sales |
| Tiffany K | Finance |
| Esharveer G | Sales |
| David O | Production |



@BethsGrammar



Beths Grammar School



@BethsGS



MACBETH

Our Year 10 students had the fantastic opportunity to watch Macbeth performed live on stage. This experience brought Shakespeare's powerful tragedy to life, helping students to deepen their understanding of the text, connect with the characters, and spark their imaginations.



@BethsGrammar



Beths Grammar School



@BethsGS

STUDENT SUCCESS

Evie's Royal Recognition for Gold DofE Achievement

Congratulations to Evie B, who was recently invited to Buckingham Palace in recognition of completing her Gold Duke of Edinburgh's Award (DofE). This incredible achievement marks the completion of all three levels of the Award – Bronze, Silver, and Gold.

Evie has shown outstanding commitment and dedication throughout her DofE journey. She volunteered at her local Brownie unit, developed new skills such as cooking, sewing, and even learnt to drive. For the physical section, Evie was a member of a Synchronised Swimming team at the Erith and District Swimming Club, where she now gives back as a coach.

Her expedition section included four walking expeditions and two bell boating expeditions, culminating in an impressive 64-mile paddling trip over four days along the River Thames, travelling upstream from Runnymede to Abingdon. To complete her Gold Award, Evie also attended a week-long residential outdoor activities camp.

Throughout her DofE experience, Evie has shown incredible resilience, perseverance, and a strong sense of community spirit. We are incredibly proud of her achievements and wish her continued success in all she does.



@BethsGrammar



Beths Grammar School



@BethsGS

STUDENT SUCCESS



If your scholar have any success stories that they would like to share with the Beths community. Please email Mseluwa@beths.bexley.sch.uk



@BethsGrammar



Beths Grammar School



@BethsGS

SPORTS FIXTURES



Congratulations to our Year 10 basket team who won the Jnr NBA 3v3 regional competition in London on Thursday.!

A huge well done to our U13 tennis team who won both their matches v Chis & Sid Sutton Valence this week.



@BethsGrammar



Beths Grammar School



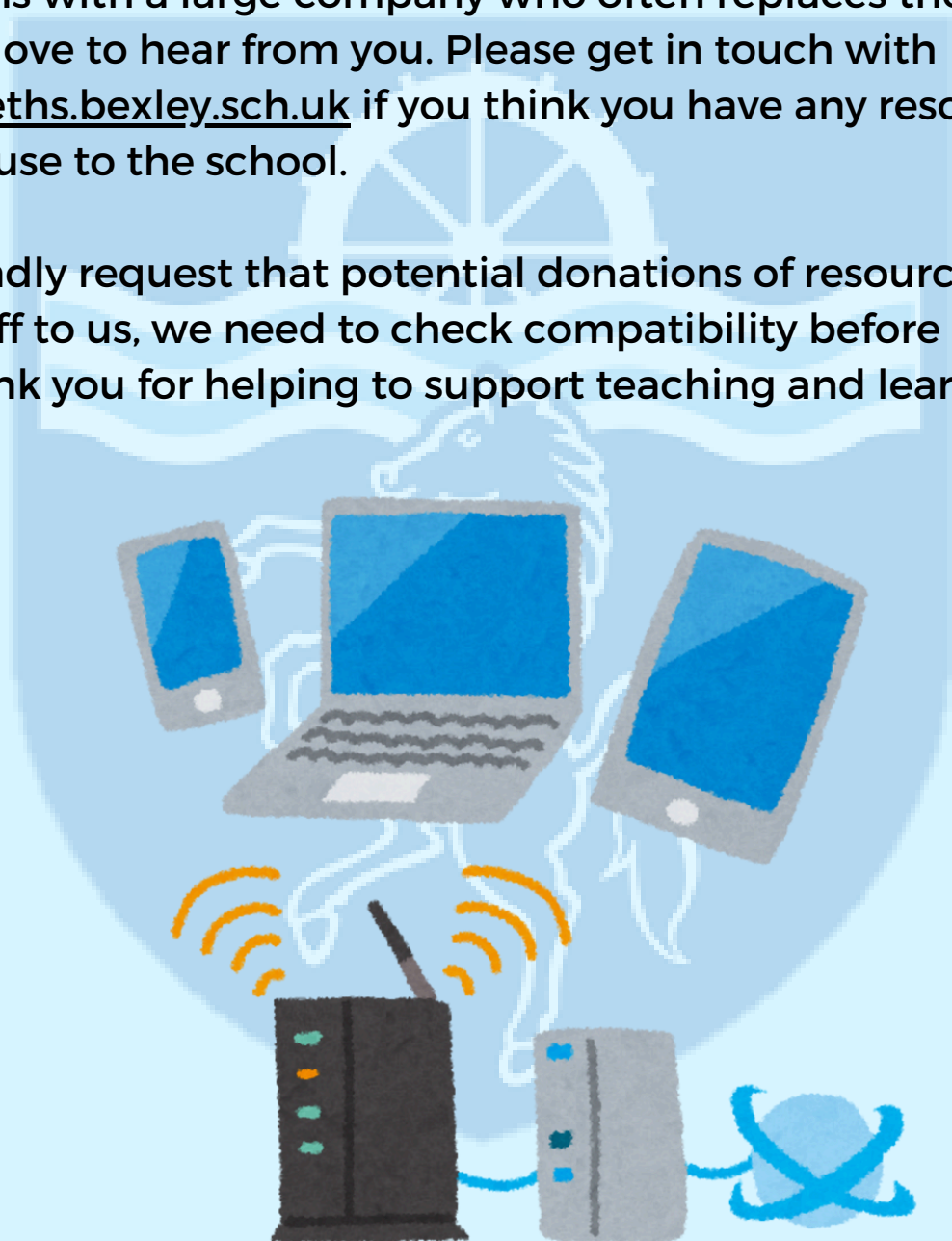
@BethsGS

TECH REQUEST

Dear Beths community,

To support our scholars we are always looking to update our resources in school. If anyone in our wider Beths community works for or has connections with a large company who often replaces their technology, we would love to hear from you. Please get in touch with admin@beths.bexley.sch.uk if you think you have any resources which may be of use to the school.

Can we kindly request that potential donations of resources are not just dropped off to us, we need to check compatibility before receiving any items. Thank you for helping to support teaching and learning at Beths



@BethsGrammar



Beths Grammar School



@BethsGS

CHINESE CLUB

In Chinese Club this week, students explored the styles and patterns of blue and white porcelain. They then used blue marker pens to draw various designs on paper plates, creating their own unique interpretations of blue and white porcelain art.

China is renowned for its porcelain and has a long and rich history of ceramic culture. Among the many types of porcelain, the most famous is blue and white porcelain (Qinghuaci). This term is often used both for the porcelain itself and the decorative technique. Blue and white porcelain is known for its fresh, bright, and elegant appearance, and it is considered a representative expression of the Chinese aesthetic



@BethsGrammar



Beths Grammar School



@BethsGS

SPORTS FIXTURES

Fixtures w/c Monday 19th May

| FOOTBALL | | | | | |
|----------|-------------------|------|------------|---------|------------|
| Date | Competition | Team | Opposition | Venue | Start time |
| 21.05.25 | North Kent Finals | U13B | Hurstmere | Neutral | 3pm |
| 21.05.25 | North Kent Finals | U13A | Hurstmere | Neutral | 4:30pm |

| TENNIS | | | | | |
|----------|-------------|------|---|-------|------------|
| Date | Competition | Team | Opposition | Venue | Start time |
| 19.05.25 | League | U13A | Skinner's School | Away | 2pm |
| 20.05.25 | League | U13A | Tunbridge Wells Grammar School for Boys | Away | 3:30pm |

| CRICKET | | | | | |
|----------|----------------|------|---------------------------------------|-------|------------|
| Date | Competition | Team | Opposition | Venue | Start time |
| 20.05.25 | North Kent Cup | U13A | St Dunstan's College | Away | 2:30pm |
| 22.05.25 | North Kent Cup | U12A | Chislehurst and Sidcup Grammar School | Away | 2pm |

*Please note that some matches may be cancelled/postponed and therefore we ask you to keep an eye on the SOCS website.
Beths Grammar School | Sports Home (bethssport.co.uk).

If you have any questions, please email us at fixtures@beths.bexley.sch.uk



@BethsGrammar



Beths Grammar School



@BethsGS

SPORTS RESULTS

Results w/c Monday 12th May

| CRICKET | | | | | |
|----------|----------------|------|---------------------------------------|-------|---------|
| Date | Competition | Team | Opposition | Venue | Results |
| 13.05.25 | North Kent Cup | U15A | Chislehurst and Sidcup Grammar School | Away | Won |

| TENNIS | | | | | |
|----------|-------------|------|---------------------------------------|-------|---------|
| Date | Competition | Team | Opposition | Venue | Results |
| 14.05.25 | League | U13A | Sutton Valence School | Away | Won |
| 14.05.25 | League | U13A | Chislehurst and Sidcup Grammar School | Away | Won |
| 15.05.25 | League | U15A | Eltham College | Away | Won |

| BASKETBALL | | | | | |
|------------|-------------|------|---------------------------------------|-------|------------|
| Date | Competition | Team | Opposition | Venue | Start time |
| 15.05.25 | Jr NBA | U15A | Jr. NBA 3v3 Tournament West Play-Offs | Away | Won |



@BethsGrammar



Beths Grammar School



@BethsGS

KEEPING YOUR SCHOLAR SAFE

At The National College, our WakeUpWednesday guides empower and equip parents, carers and educators with the confidence and practical skills to be able to have informed and age-appropriate conversations with children about online safety, mental health and wellbeing, and climate change. Formerly delivered by National Online Safety, these guides now address wider topics and themes. For further guides, hints and tips, please visit nationalcollege.com.

What Parents & Educators Need to Know about MINECRAFT



WHAT ARE THE RISKS?

Still the best-selling game of all time, Minecraft is a bastion of creativity and community, with hundreds of millions of players building and crafting in its almost endless world. The popularity of Minecraft among gamers of all ages means it's important to remain informed about the game, including how to play it safely and whether it's suitable for the children in your care. That's why we've created this guide explaining the risks associated with Minecraft and how to ensure a purely enjoyable gaming experience.

SCARY ELEMENTS

While Minecraft can be seen as a kind of 'digital LEGO', certain game modes include creatures accompanied by eerie sound effects. These can be a bit too frightening for some younger players, potentially leading to distressing in-game combat and other encounters – although the combat is quite basic and free from any real depiction of violence.

GRIEFING

Some players in Minecraft take pleasure in deliberately damaging or destroying another person's creations. This behaviour, known as 'griefing', is a form of bullying – it intentionally ruins someone else's experience by erasing hours of their work and forcing them to start over. Many public servers regard griefing as a serious offence and often ban those who engage in it.

ADDICTIVENESS

Minecraft's focus on creativity means that, as with any creative endeavour, it can be easy to get carried away. If your child is finding it difficult to manage their time because they're drawn in by Minecraft's gameplay loop of resource gathering and building elaborate projects, it could have a knock-on effect on their social interactions and schoolwork.

PUBLIC SERVERS AND COMMUNICATIONS

With public servers being so easily accessible in Minecraft, it's highly likely that children will end up chatting with strangers through the in-game text chat. Some servers even place an emphasis on social interaction, actively encouraging communication between players. While there's nothing inherently wrong with this, it does carry certain risks. In addition to the concerns around speaking with strangers online, players who host their own servers may have their IP addresses exposed, posing a further security concern.

ADDITIONAL PURCHASES

Minecraft is available as a free trial on a variety of devices; however, the full game requires a one-off purchase, which is typically around £15. After that, players have the option to buy additional cosmetic upgrades or subscribe to Minecraft Realms. Realms is an entirely optional subscription service that allows users to run their own private server to play with friends. Without proper supervision, younger players may end up making unintended or excessive purchases.

Advice for Parents & Educators

CHOOSE THE RIGHT MODE

Selecting Creative or Peaceful mode allows children to play Minecraft without having to contend with enemies. It's also a great way for you to get used to playing the game with them, since the difficulty level is far lower. This allows you to work together on a long-term project, creating something special without the threat of enemies and creatures attacking you or damaging your building.

HOST A PRIVATE SERVER

The easiest way to find a safe server for children to play on is to make one yourself. Hosting a server prevents strangers from finding it, unless they've been given its address and password. A private server also lets you control who's allowed to enter and – if necessary – ban anyone who shouldn't be there. This is the closest equivalent to parental controls in Minecraft. Hosting a private server, however, will cost a monthly fee.

TALK ABOUT STRANGERS

At some point in their lives, almost everyone will make contact with a stranger online. Talking to children about online safety, therefore, is essential – as is having a plan for dealing with any hostile or difficult people. It's important that a child knows never to tell a stranger about themselves online and that they should come to you straight away if they do encounter a problem.

RESEARCH CONTENT CREATORS

Much of Minecraft's early stages can be an exercise in frustration for players who don't know where to start. Thankfully, there's a wealth of material online and in video format to help you learn the basics. Just be mindful that some of this content may not be appropriate for children, so you should consider watching it yourself first.

PLAY MINECRAFT WITH YOUR CHILD

As a creative building tool, Minecraft makes it great fun for children to team up and construct vast buildings accompanied by imaginative landscapes, much like working with LEGO or model kits. Playing in a game mode that includes enemies can encourage critical thinking and teamwork; however, you should consider which game mode is appropriate for the child in your care.

Meet Our Expert

Lloyd Coombes is Gaming Editor at the Daily Star, and has worked in games media for more than 8 years. A long-time gaming enthusiast, he is also a parent and therefore a keen advocate of online safety for children of all ages.



X @wake_up_weds

f /wuw.thenationalcollege

@wake.up.wednesday

@wake.up.weds

Users of this guide do so at their own discretion. No liability is entered into. Current as of the date of release: 14.05.2025



@BethsGrammar



Beths Grammar School



@BethsGS

ACTIONS FOR HAPPINESS CALENDAR

Meaningful May 2025

MONDAY



5 Let someone know how much they mean to you and why

12 Listen to a favourite piece of music and remember what it means to you

19 Reflect on what makes you feel valued and purposeful

26 Remember an event in your life that was really meaningful

TUESDAY



6 Look for people doing good and reasons to be cheerful

13 Find out about the values or traditions of another culture

20 Share photos of 3 things you find meaningful or memorable

27 Focus on how your actions make a difference for others

WEDNESDAY



7 Make a list of what matters most to you and why

14 Get outside and notice the beauty in nature

21 Look up at the sky. Remember we are all part of something bigger

28 Do something special and revisit it in your memory tonight

THURSDAY

1 Do something kind for someone you really care about

8 Set yourself a kindness mission to help others today

15 Do something to contribute to your local community

22 Find a way to help a project or charity you care about

29 Today do something to care for the natural world

FRIDAY

2 Focus on what you can do rather than what you can't do

9 What values are important to you? Find ways to use them today

16 Show your gratitude to people who are helping to make things better

23 Recall three things you've done that you are proud of

30 Share a quote you find inspiring to give others a boost

SATURDAY

3 Take a step towards an important goal, however small

10 Be grateful for the little things, even in difficult times

17 Find a way to make what you do today meaningful

24 Make choices that have a positive impact for others today

31 Find three reasons to be hopeful about the future

SUNDAY

4 Send your friend a photo from a time you enjoyed together

11 Look around for things that bring you a sense of awe and wonder

18 Send a hand-written note to someone you care about

25 Ask someone else what matters most to them and why



ACTION FOR HAPPINESS

Happier · Kinder · Together



@BethsGrammar



Beths Grammar School



@BethsGS

BETHS GRAMMAR SCHOOL,
HARTFORD ROAD
BEXLEY
KENT
DA5 1NE

Email Address: admin@beths.bexley.sch.uk

**Email Address (to be used for items/concerns of a more
'sensitive' nature): HeadsPA@beths.bexley.sch.uk**

Telephone Number: 01322 556538



@BethsGrammar



Beths Grammar School



@BethsGS