



**Excellence • Community • Respect**



## **Beths Grammar School**

Hartford Road, Bexley, Kent DA5 1NE

Tel: 01322556538


sixthformadmissions@beths.bexley.sch.uk

www.beths.bexley.sch.uk

*Beths Grammar School*



**BETHS GRAMMAR  
SCHOOL  
YEAR 12  
ENTRY 2026**



[www.beths.bexley.sch.uk](http://www.beths.bexley.sch.uk)

# WELCOME TO BETHS SIXTH FORM

Beths Grammar School Sixth Form is the place to craft and fashion the rest of your life. We will educate and develop you, change your perceptions of how to study, foster a deeper love for lifelong learning with opportunities and pathways opening up as you age and ultimately mature from being a teenager who has achieved much success at GCSE and reliant on their teachers to an adult with top A level grades who is independent, self-motivated, unique and ready to move onto the next stage of your life.

Our primary focus is securing high academic achievement but we are also a compassionate school which has an excellent pastoral programme to ensure all of our students are supported and cared for every step of the way. What sets the school apart from others is our focus on the development of the whole child within a highly academic environment and we pride ourselves on taking care of your personal well-being and mental health.

We are also excited to announce that our state-of-the-art new Sixth Form building opened earlier this year.

Beths Grammar School is a rich and diverse community brought together from mixed and single sex schools, comprehensive and grammar schools, Bexley, Kent, Bromley, Greenwich, Lewisham and much further afield who all work together to help each other succeed. This is a place to make new friends.

## Mr R J Blyghton, Headteacher

Being a sixth former at Beths is an exhilarating journey marked by a commitment to excellence, respect, community, and nurture. Here, every day is an opportunity to dive into a challenging curriculum designed to push intellectual boundaries and spark a lifelong love of learning. Excellence isn't just a goal but a culture that permeates every classroom and activity, inspiring students to strive for their very best. Respect forms the cornerstone of our vibrant school environment. Every interaction, whether between peers or between students and teachers, is grounded in a profound mutual regard that fosters a positive and inclusive atmosphere. This respect extends beyond the classroom, creating a supportive community where diverse perspectives are valued and collaboration thrives.

From your first day, you are immersed in a great learning culture, with teachers that care for your learning needs and look to see you thrive in your interests. Your lessons will be filled with fascinating class discussions and challenging problems. Although this may seem daunting, your teachers will guide and support you, ensuring that no-one is left in the dark.

These experiences don't just come from the classroom. Beths holds a vast array of clubs, societies and competitions, which allows you to exercise your leadership and stretch your capabilities. These opportunities, such as becoming a member of the Prefect Team, House Captain or our MCC, really highlight the degree of care taken by the school to ensure your academic and social development, ensuring that you exceed your potential.

In short, the connections that you will build during your time at Beths are second to none, with you making some of the strongest bonds of your school journey. You have the potential to do something great and coming to Beths will unlock that and change your life.



Dominik Garner - Head Boy

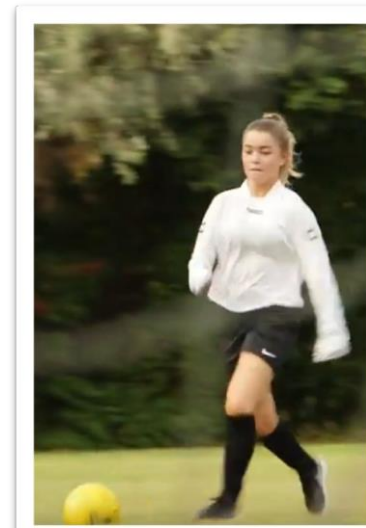


Betul Kaya - Head Girl

# LIFE AFTER BETHS

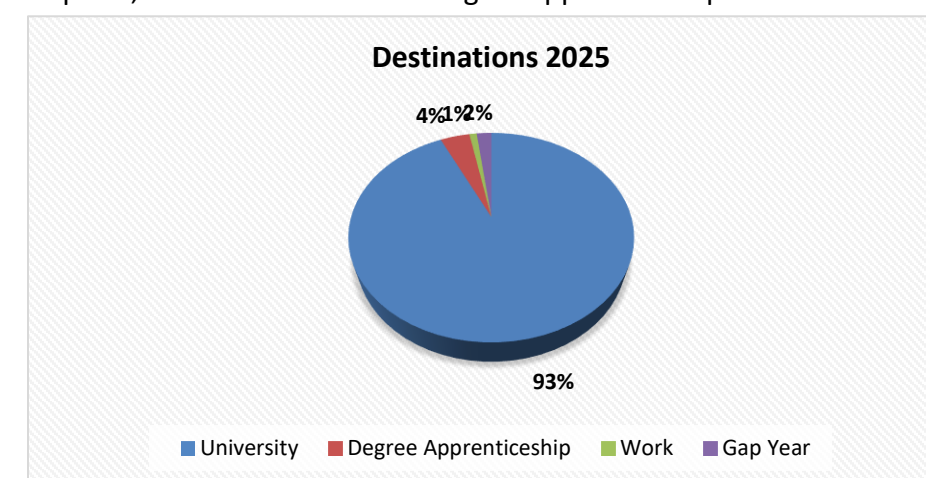
Whether you choose to go to University, complete a degree apprenticeship or decide you would like to go into the workplace, we offer a wide range of support to help assist students and parents with these important decisions. Some of the support available includes:

- Specialist support and regular meetings for courses in Medicine, Dentistry and Veterinary Science.
- Regular support sessions for Oxbridge candidates.
- Higher Education information for students and parents with valuable information about initial decisions on course choice and university types.
- Follow up Higher Education information with workshop sessions, for particular subject choices and UCAS application advice.
- Higher Education and Careers Event (dependent on local restrictions)
- A day of support from University admissions tutors, helping students with their personal statements.
- Focused group sessions, with invited specialists, such as Engineering, Law and Medicine.
- Advertising and facilitating for university led 'taster days'.
- Dedicated Tutor time, and on-going support throughout the drafting



## DESTINATIONS

The majority of our students leave Beths to attend University. At the end of the last academic year, 93% of our Year 13 students went on to begin their undergraduate studies at universities all around the country. Some students decided that University was not the right next step for them and this choice was fully supported by the school. The graph below shows that a small number of our students chose to move straight into the workplace, in some cases on to a degree apprenticeship.



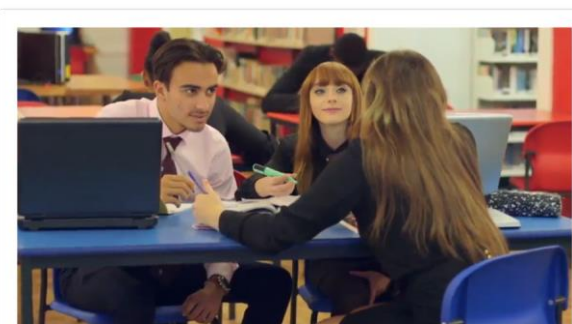
83% of these students progressed onto either Russell Group or other more selective universities\*. We aim to encourage all of our students to aspire to the best courses and universities for their chosen avenues of studies.

\* Includes the likes of Aberdeen, Aston, Bath, Brunel, Cambridge, City, Durham, Essex, Hull, Goldsmiths, Kent, Kings, Lancaster, Leicester, Loughborough, Nottingham, Oxford, Reading, Royal Holloway, St George's, Surrey, Southampton, Sussex, Swansea, UCL, UEA, York.

# ACADEMIC SUPPORT & REPORTING

## ACADEMIC AND PASTORAL SUPPORT

- ◆ Each student will be allocated into a tutor group associated with a house. Tutors have been specially selected for their expertise in helping students with UCAS applications and writing references. Form Tutors are the first point of contact between school and home.
- ◆ A team of four first aid trained Assistant Heads of Year 12 and 13, whose job it is to provide the academic and pastoral support that every student needs to succeed. As non-teaching members of staff, all of their time is dedicated to providing our Sixth Formers with a conducive and motivating learning environment. By building relationships with students and recognising them as individuals, they are able to act as a link between home and school by providing personalised support according to their needs. Additionally, they offer guidance in choosing either higher education or future careers by working with students to write personal statements, covering and preparing for interviews.
- ◆ An independent and professional counsellor who you can access at any point during the school week.
- ◆ A dedicated Head of Year.
- ◆ A dedicated Assistant Headteacher overseeing the whole year group.
- ◆ A dedicated Careers Team who can offer guidance on apprenticeships and careers.
- ◆ Multiple assessments and reports throughout the year, including trial exams and in class assessments. Helping staff and students to understand if and where support may be required.

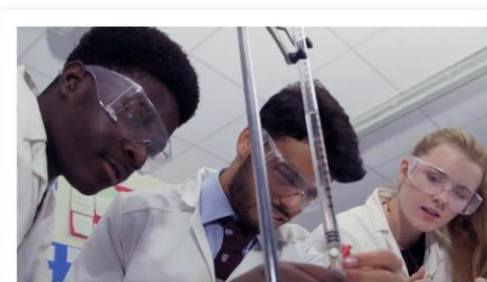


## REPORTING AND ASSESSMENT

We feel that providing students and parents with accurate and regular feedback and predicted grades is vital to enable students to achieve their very best. As a result of this, we will provide a report on predicted grades, as well as effort and homework scores, three times per year. Additionally, we have at least one parents' evening per year to provide parents and carers with support and guidance

Using the information gained from staff, our team of tutors will provide mentoring for each student. Additionally, our Assistant Heads of Year and the Senior Leadership Team, will meet with selected students who are at risk of not reaching their academic capabilities. Improvement plans will be put in place and these are communicated home. Parents are frequently asked to attend these meetings to ensure that the student is being supported from all sides.

At Beths we believe that, for students to really succeed, they need an accurate and honest assessment of their strengths and weakness as well as guidance on how best to use their time to improve.



# WHY BETHS IS BEST

- ◆ We offer over 30 different full A Level courses.
- ◆ All A Level subjects are taught over seven periods per fortnight, each lasting 100 minutes, in a classroom with a specialist subject teacher.
- ◆ We understand the difficulties facing Sixth Form students in balancing their study and personal time.
- ◆ Independent Study: students are encouraged to study outside of their lessons in our dedicated Sixth Form Study Centre, Learning Resource Centre or outside of the school site. All students will have timetable periods dedicated to independent study. We believe that, as our students mature into adulthood and prepare for life at university or beginning their careers, the opportunity to learn how to prioritise and work independently is a valuable quality we encourage at every opportunity.
- ◆ In Year 12 students are supported in securing a week long work experience placement of their choice. This internship opportunity gives our students vital experience in the workplace or field of expertise that they will continue in their studies. This experience is vital when students come to prepare their personal statements in Year 13.
- ◆ State-of-the-art brand new Sixth Form building.
- ◆ A dedicated first aid trained Student Services Team, made up of six members of staff, is available to students throughout their day. Assistant Heads of Year are based in and around our Sixth Form Study Centre, and are there for any mentoring, well-being or support needs that a student may have.
- ◆ Personal statement, UCAS and Careers support is provided from the start of your journey at Beths, preparing you for your future. With a full-time careers team available to all students.



# OUR CURRICULUM

At Beths we offer 30 different A Level courses. Students will study three A level subjects, each which are two years in duration. For our most able students, there is the option to study four A Levels and, for students embarking on Further Mathematics, you will also be required to study four A Levels.

Each subject is taught for six periods per fortnight in the classroom with a specialist subject teacher.

To become a Sixth Form student at Beths you will be required to have achieved a minimum of seven full GCSE courses at grades 9-5, which must include English and Mathematics (at grade 5 or above) and an average grade six across your seven best.

|                                   |   |
|-----------------------------------|---|
| Ancient History                   | Grade 6 in Ancient History or Grade 6 in History  |
| Art & Design: Fine Art            | Grade 6 in Art  |
| Art & Design: Digital Photography | Grade 6 in Art or Photography   |
| Biology                           | 7 in Biology (or 7/7 Combined Science) and 6 in Maths   |
| Business Studies                  | Grade 6 in Maths and English or 6 in Business Studies   |
| Chemistry                         | Grade 7 in Chemistry or 7/7 in Combined Sciences and 6 in Maths   |
| Chinese Mandarin                  | Grade 6 in Mandarin   |
| Computer Science                  | Grade 6 in Maths or 6 in Computer Science   |
| Design Technology                 | Grade 7 in Design Technology  |
| Drama & Theatre Studies           | Grade 6 in English  |
| Economics                         | Grade 6 in Maths and English or 6 in Economics  |
| Electronics                       | Grade 7 in Maths and 6 in Physics or Combined Science 6/6 or 6 in Electronics   |
| English Literature                | Grade 6 in English Literature   |
| Film Studies                      | Grade 6 in English or a humanities subject  |
| French                            | Grade 6 in French   |
| German                            | Grade 6 in German   |
| Geology                           | Grade 7 in Geology if taken at GCSE and a Grade 6 in Maths OR Grade 6 in Maths and Grade 7 at GCSE in either Physics or Chemistry or grade 7/7 in Combined Science, if Geology not studied at GCSE. |
| Geography                         | Grade 6 in Geography  |
| Politics                          | Grade 6 in English or a humanities subject (except Geography)   |
| History                           | Grade 6 in History  |
| Mathematics                       | Grade 7 in Mathematics  |
| Further Mathematics               | Grade 8 in Mathematics  |
| Music                             | Grade 6 in Music or 5 in ABRSM Practical and Theory   |
| PE                                | Grade 6 in PE or Biology or Sociology or Psychology or 6/6 in Combined Science  |
| Physics                           | Grade 7 in Maths and 7 in Physics or 7/7 in Combined Science  |
| Psychology                        | 6 in Psychology (or Grade 6 in English if not studied at GCSE) and Grade 6 in Biology (or 6/6 in Combined Science)  |
| Religious Studies                 | 6 in RS (or a 6 in English Literature or Language if RS not studied at GCSE)  |
| Sociology                         | 6 in Sociology (or 6 in English if Sociology not studied at GCSE)   |
| Spanish                           | Grade 6 in Spanish  |

Due to the significant challenges that A levels present, and the additional challenges of taking subjects that were not covered during GCSEs, Beths will not allow students to do multiple 'new' subjects unless their GCSE average grades suggest the academic ability to do so.

Students wishing to do multiple new subjects will be expected to have grades 7 or above in the relevant subjects, and even higher if they wish to do three new subjects.

## OVERSUBSCRIPTION CRITERIA

Where there are more applicants from other schools who are predicted to meet the entry requirements than the number of places available, the following criteria will be used to decide which students to offer places to:

- ◆ Applicants who are, or have been, looked after children
  - Students with siblings attending Beths Grammar School at the time of enrolment
  - Proximity to the school measured by reference to the shortest radial distance.

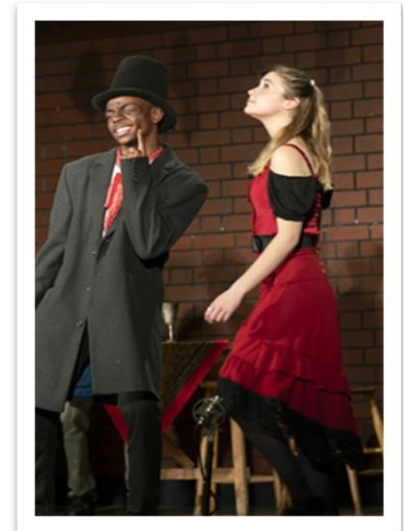
## APPLICATION PROCEDURE

All students interested in joining Beths Grammar School, are invited to complete the online application form which is available on our website from Thursday 20<sup>th</sup> November 2025: <https://beths.applicaa.com/2026>

# ENRICHMENT OPPORTUNITIES

In addition to A Levels, we provide an excellent Enrichment programme which is called 'LEAP' – **Lead, Enrich, Act, Participate**. This means you will be able to benefit from some of the following:

- Community placements in local primary schools
- Assisting students from Marlborough School
- Subject Mentoring for younger Beths students
- Volunteering as a Road Safety Ambassador
- Volunteering on the Keep Bexley Tidy Scheme
- Completing an Extended Project Qualification
- Completing a MOOC (Massive Open Online Course) with Future Learn or EdX
- Completing a week-long Internship placement in June
- Completing a Duke of Edinburgh award
- Completing a National Citizen Service Award
- Participating in Games and Sports fixtures
- Participating in School Concerts and Drama productions



During Year 12, students can apply for the prestigious positions of Head Boy, Head Girl, Deputy Head Boy, Deputy Head Girl, Senior Prefects, House Captains and Prefects.

Students awarded these posts play a very prominent role in the day to day running of the school.



They help by assisting and supporting staff and students in all manner of ways, from representing the school at public functions like open events and presentation evenings, to acting as excellent role models to not only the wider Sixth Form body, but all the students in the school.

Students become more confident and improve their leadership, presentation and organisational skills.